

The 80 6\ VWHP 2dFH RI (QJDJHPHQW DQG 2XWUHDFK connects the UM System to  
FRPPXQLWLHV RI 0LVVRXUL (QJDJHPHQW H[WHQGV WKH NQRZOHG  
four universities across the state to build a better future.

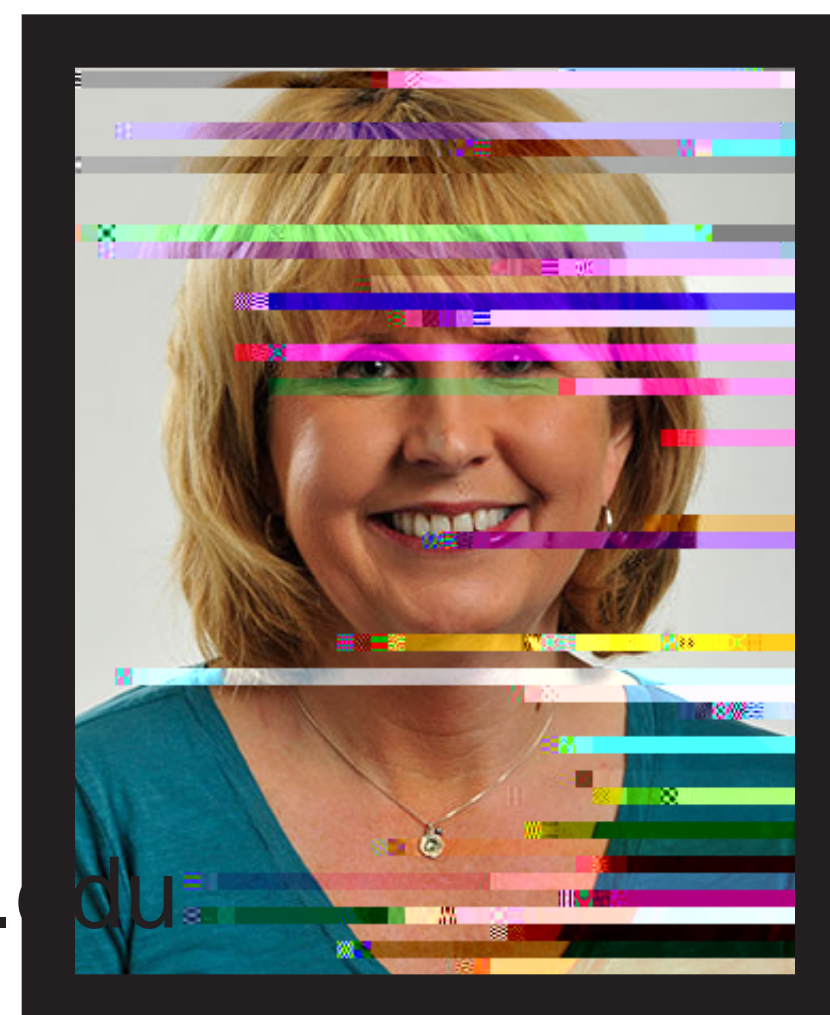
## : K D W L V ( Q J D J H P H Q W "

Engagement is all the ways in which the University and the greater community partner to establish a relationship of value, share information and improve the lives of those in Missouri and beyond.

The UM System Office of Engagement and Outreach recognizes, celebrates and helps facilitate the engagement that happens through daily interactions between the public and each person, unit, department, office and school at all four universities across the system. The Office of Engagement leverages these interactions and fosters even stronger ties with the citizens of Missouri through strategic engagement, which can come in many forms. For more details on what systemwide engagement means, please see the flip side of this document.

**Marshall Stewart**  
UM System Chief  
Engagement Officer

(573) 882-2394  
stewartmars@umsystem.edu



**Alison Copeland**  
UM System Deputy Chief  
Engagement Officer

(573) 884-4655  
copelanda@umsystem.edu



**Ashley Rhode**  
UM System Engagement  
& Outreach Associate

(573) 884-3257  
rhodea@umsystem.edu



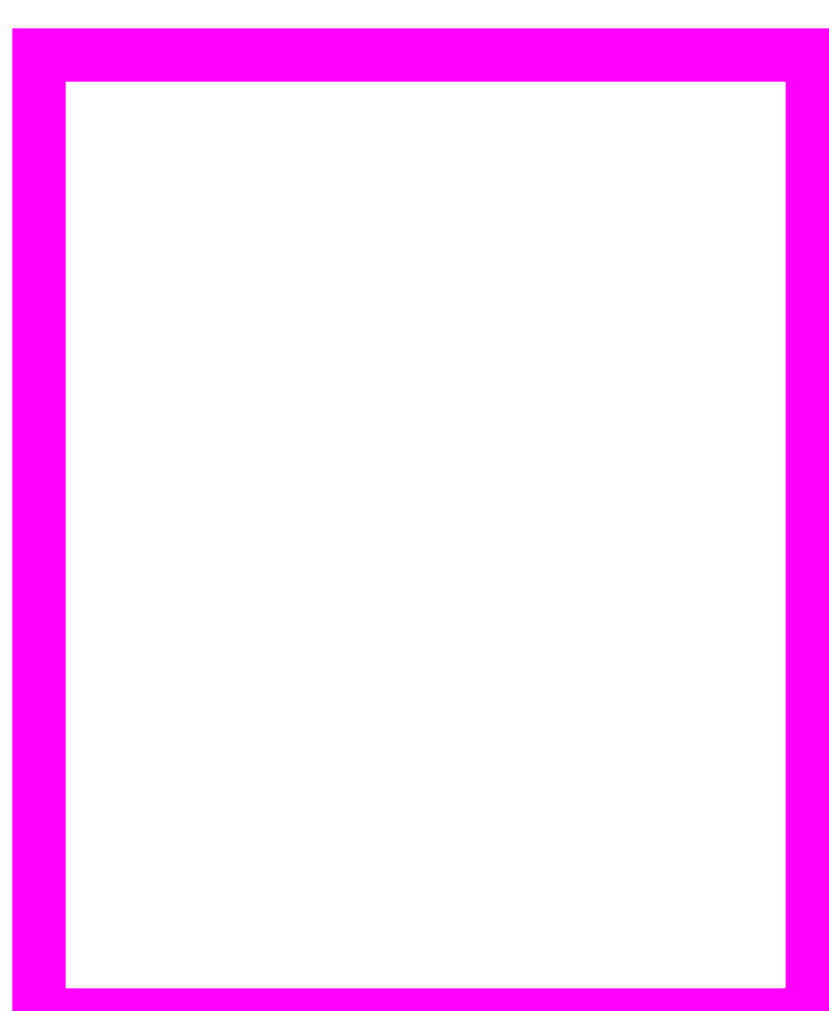
**Susan Renoe**  
MU Assistant Vice Chancellor, Research  
Extension and Engagement

(573) 882-2270  
renoes@missouri.edu



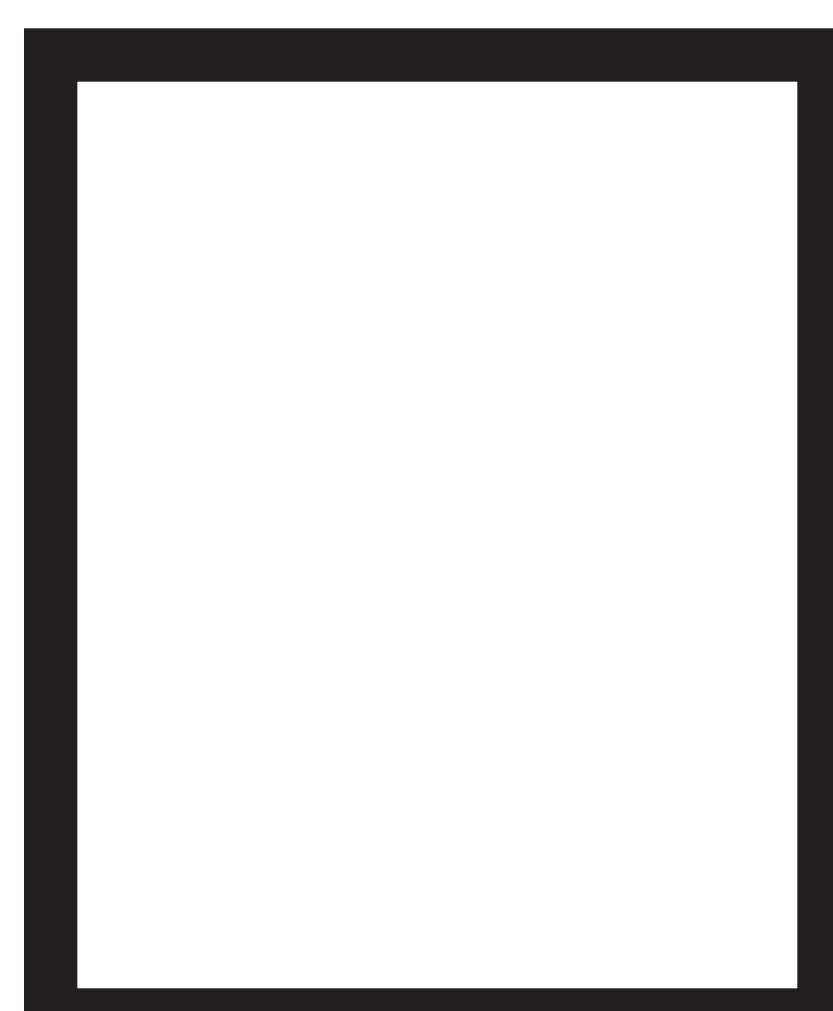
**Troy Lillebo**  
UMKC Assistant Vice Chancellor,  
External Relations

(816) 235-6585  
lillebot@umkc.edu



**Melanie Keeney**  
Missouri S&T Director, Engagement  
and Outreach

(573) 341-4786  
mkeeney@mst.edu



**Patricia Zahn**  
UMSL Director, Community Outreach  
and Engagement

(314) 516-5267  
zahnp@umsl.edu



### 3 UHVLGHQWLD O (QJDJHPHQW )HOORZV

The Presidential Engagement Fellows program was established to share faculty accomplishments  
ZLWK WKH FLWLJHQV RI 0LVVVRXUL LQ WKHLU RZQ FRPPXQLWLHV  
FRQQHFWRQV DQG GHOLYHU RQ RXU LPSRUWDQW PLVVLRQ WR G  
RI DOO 0LVVVRXULDQV )RU PRUH LQIRUP [DnW LUS/Def](#) DQG WKLV \HDU ¶V

### (QJDJHPHQW 3RUWDOV

Every day, we are working to address the three grand challenges of economy, education and health

---