

---

## Design Considerations

- Simple to use
- Secure
- Tailored to specific individual's needs
- Report utilization / tracking mechanism
- Use existing technology and standards
- Database driven and easy to maintain

# Current View of Diamond Mine

University of Missouri Health Care - Diamond Mine - Microsoft Internet Explorer

File Edit View Favorites Tools Help

Back Forward Stop Refresh Home Search Favorites History Mail Print Discuss

Links Google MUHealth ITS Web - UH ITS Web - CRH EFRS Sign In Chart Advisory Weather Microsoft Press Ganey

Address http://diamond.umh.edu/diamond/diamond.asp

Welcome Michael!

**DIAMOND MINE**

PLANNING, DATA ANALYSIS & DECISION SUPPORT

**Diamond Mine Groups**

Contact Diamond Mine Administration

**- In the News -**

... vaccine shortages:  
(6/3/02) The New York Times

Critical shortage of nurses in Washington, nationwide expected to...

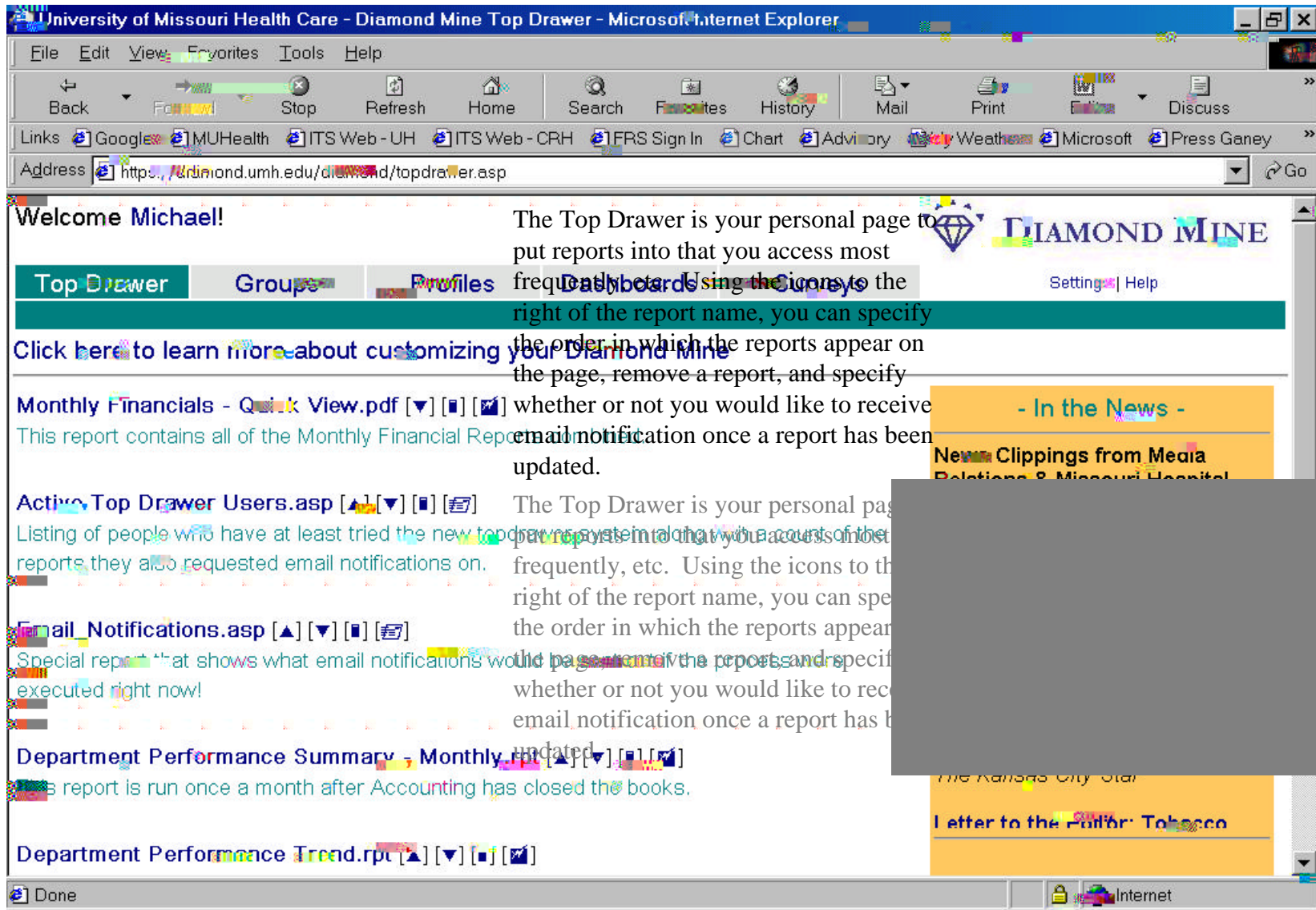
Additional News Sources  
MUHealth Insights  
MUHealth  
AHA NewsNow

**Reports for Michael**

- Michael (1 report updated)
- ~Items for Review
- Administrations Financial Reports (1 report updated)
- Benchmarking
- Budget FY03 Information
- Care in Aging
- Census - Columbia Regional (1 report updated)
- Census - UH - A/D - Detail-Previous Day (4 reports updated)
- Census - University Hospital (9 reports updated)
- Charge Filer (6 reports updated)
- Childrens Hospital (1 new report available)
- Children's Hospital (1 report updated)
- Columbia Regional Hospital (1 new report available)
- Custom Reports and Teaching Aides
- Department Performance Reports
- Emergency Center (1 new report available)

Click on Diamond Mine image to go to try the new interface

# New Diamond Mine Interface



# All Reports Still Available in “Groups”

University of Missouri Health Care - Diamond Mine Groups - Microsoft Internet Explorer

File Edit View Favorites Tools Help

Back Forward Stop Refresh Home Search Favorites History Mail Print Discuss

Links Google MUHealth ITS Web - UH ITS Web - CRH EFRS Sign In Chart Advisory Weekly Weather Microsoft Press Ganey

Address http://diamond.umh.edu/diamond/groups.asp Go

Welcome Michael!

**DIAMOND MINE**

Top Drawer **Groups** Profiles Dashboards Surveys Settings Help

Click here to learn more about Diamond Mine Report Groups

- Michael (1 report updated)
- ~Items for Review
- Administrations Financial reports (1 report updated)
  - Assoc Director Budget Compare Report.rpt + ?
  - Current Month Variance Report - Contract Labor.rpt + ?
  - Current Month Variance Report - Non Sal Exp.rpt + ?
  - Current Month Variance Report - Salary.rpt + ?
  - Current Month Variance Report - Supply Expense.rpt + ?
  - YTD Variance Report - Contract Labor.rpt + ?
  - YTD Variance Report - Net Income.rpt + ?
  - YTD Variance Report - Salary.rpt + ?
  - Retention Compensation Agreements Paid.rpt + ? Updated
- Benchmarking
- Budget FY03 information
- Care in Aging
- Census - Columbia Regional (1 report updated)
- Census - UH - A/L/T Detail-Previous Day (4 reports updated)
- Census - University Hospital (9 reports updated)
- Charge Filer (6 reports updated)
- Childrens Hospital (4 new report available)

Subscribe to other groups

New groups added in the last 30 days:

**MUHC Tiger Tales** group was added on 5/30/02 with 4 members

Click on the new “+” icon to add a report to your Top Drawer page!

Done Internet



# Try the New Survey Section

The screenshot shows a web browser window titled "University of Missouri Health Care - Diamond Mine Surveys - Microsoft Internet Explorer". The address bar shows the URL "https://diamond.umh.edu/diamond/surveys.asp". The page content includes a navigation menu with "Surveys" highlighted, a list of hospital departments with report counts, and a "Patients' Perspectives" section with testimonials and a "Service Quality Link".

University of Missouri Health Care - Diamond Mine Surveys - Microsoft Internet Explorer

File Edit View Favorites Tools Help

Back Forward Stop Refresh Home Search Favorites History Mail Print Favorites Discuss

Links Google MUHealth ITS Web - UH ITS Web - CRH FRS Sign In Chart Advisory Weather Microsoft Press Ganey

Address https://diamond.umh.edu/diamond/surveys.asp

Welcome Michael!

DIAMOND MINE

Top Drawer Groups Profiles Dashboards **Surveys** Settings Help

[Click here to learn more about Patient Satisfaction Surveys](#)

- Childrens Hospital (1 new report available)
- Columbia Regional Hospital (1 new report available)
- Custom Reports and Teaching Aides
- Emergency Center (1 new report available)
- Medical Practice
- Missouri Rehabilitation Center
- MUHC Tiger Tales (1 new report available)
- Outpatient (1 new report available)
- Patient Satisfaction Resources
- University Hospital
  - Qtr 3 Yr 2 UH Inpatient Full Report.PDF +
  - Qtr 3 Yr 2 UH Inpatient Summary.pdf +
  - Poster to Increase Inpatient Responses.pdf +
  - Qtr 2 Yr 2 UH Inpatient Full Report.PDF +
  - Qtr 2 Yr 2 UH Inpatient Summary.pdf +
  - Qtr 2 Yr 2 UH Inpatient Summaries.pdf +
  - Qtr 1 Yr 2 UH Inpatient Full Report.pdf +
  - Qtr 1 Yr 2 UH Inpatient Summary.pdf +
  - Q1 Y2 UH Inpatient Units.PDF +
  - Q4 UH Inpatient Units.PDF +

- Patients' Perspectives -

Quality is never an accident. It is always the result of high intention, sincere effort, intelligent direction, and skillful execution.

Patient Satisfaction Comments

Brookfield Clinic - MedPrac Survey  
*Prompt and courteous service. Received advice and special help in obtaining appointment with surgical consultant. Very organized and good personal care.*

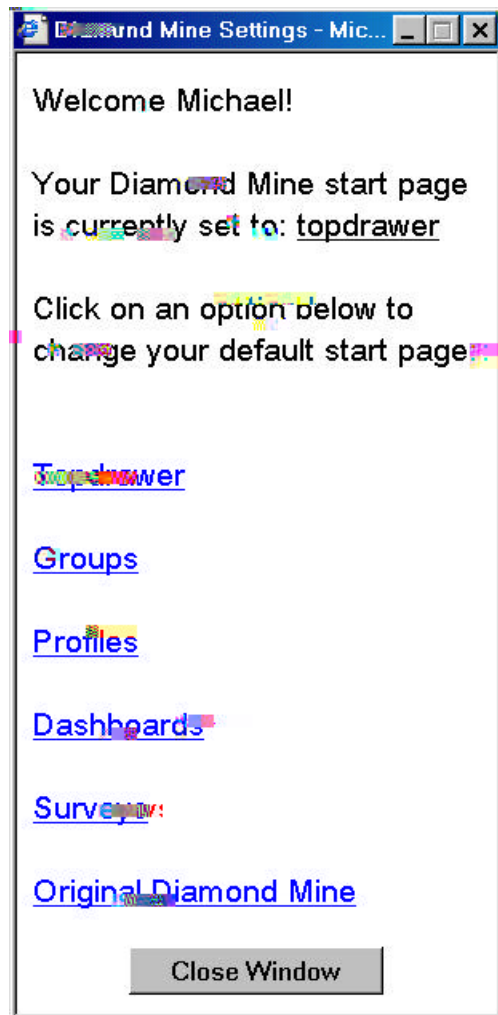
Regional Medical - MedPrac Survey  
*"Everyone I come into contact with at the office was very nice and helpful. The wait was not too long, but the friendliness and*

Service Quality Link

https://diamond.umh.edu/crystal/crystal\_print.asp?report=Poster to Increase Inpatient Responses.pdf

# Setting Your Diamond Mine Default Page

---



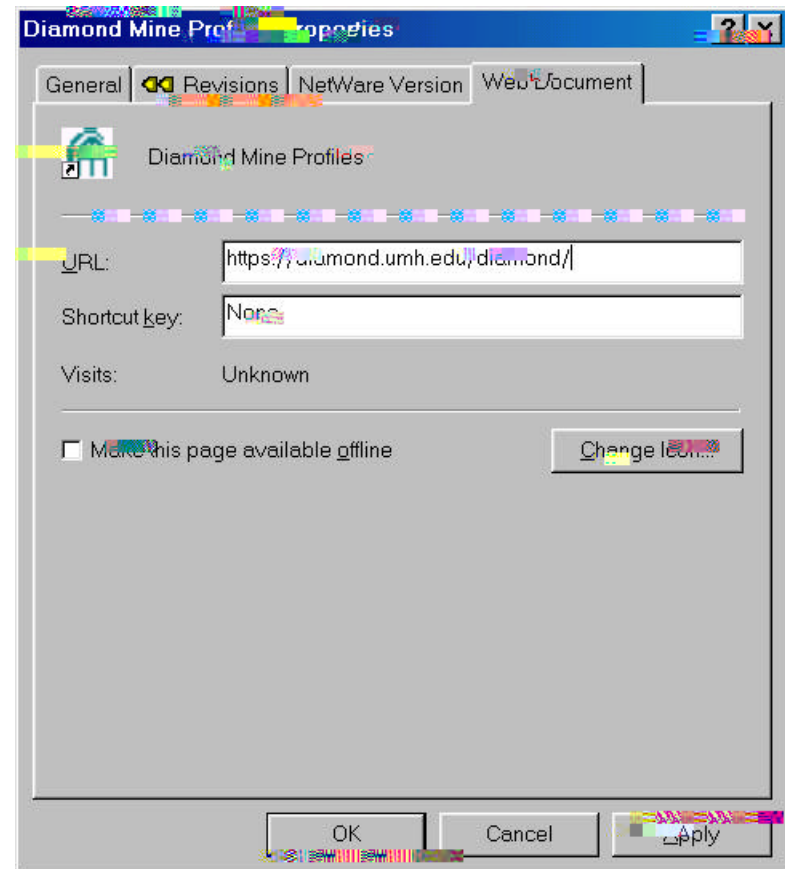
This is the screen you will see when you hit “Settings” from any of the Diamond Mine pages. Using this form, you select which page will be your

# Favorites Shortcut

---

If you have already set Diamond Mine as a favorite, you will likely need to update its properties in order to have it go directly to your choice of Diamond Mine start pages.

Right click over the shortcut and edit the URL to look like this the image to the right.



---

