

Graduate Student Survey
at University of Missouri, 2002

(UM and UMR Data)

Fall 2002

Report prepared by Ming Wang, Ed. D.
Associate Analyst
wanghui@umsystem.edu

With Assistance from
Randy Sade

October 2002

P&B 2002, Report 10

II. Executive Summary (UM)

- ◆ The majority of the students (89%) rated the overall quality of their academic programs as excellent, very good, or good.
- ◆

III. GSS 2002 and Respondents (UM)

Table 1: Comparison of GSS 2002 Respondents and Population

	<u>GSS 2002</u>	<u>Population</u>	<u>GSS 2002</u>	<u>Population</u>	<u>GSS 2002</u>	<u>Population</u>	<u>GSS 2002</u>	<u>Population</u>	<u>GSS 2002</u>	<u>Population</u>
	<u>UMC</u>		<u>UMKC</u>		<u>UMR</u>		<u>UMSL</u>			
<u>Program</u>										
Masters	50%	46%	69%	59%	60%	73%	69%	80%	57%	59%
Doctors	50%	54%	31%	41%	40%	27%	31%	20%	43%	41%
<u>Ethnicity</u>										
Afr.+Am.Ind.	5%	6%	6%	11%	3%	4%	8%	12%	5%	9%
Asian	12%	3%	18%	7%	40%	4%	8%	3%	16%	4%
White	83%	91%	77%	82%	58%	92%	84%	85%	78%	87%
<u>Citizenship</u>										
U.S.&PR	70%	81%	70%	88%	31%	48%	83%	91%	65%	83%
International	30%	19%	30%	12%	69%	52%	17%	9%	35%	17%

Note: GSS 2002 population is defined as all graduate students enrolled in the Fall of 2001.

Source: http://www.system.missouri.edu/planning/exec_ref/1_21.xls

IR&P/MW 08/02

IV. Profile of GSS

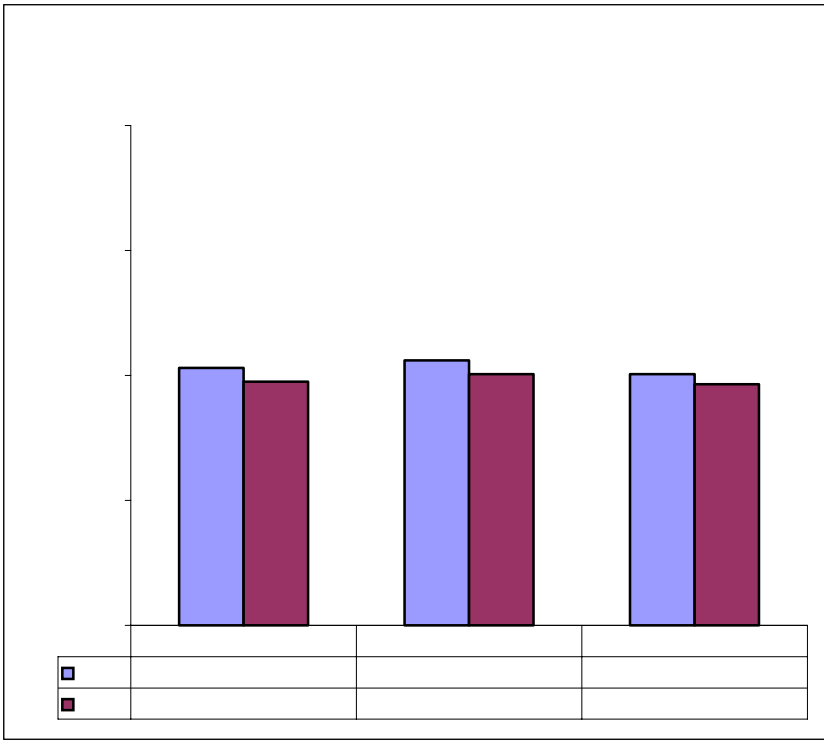
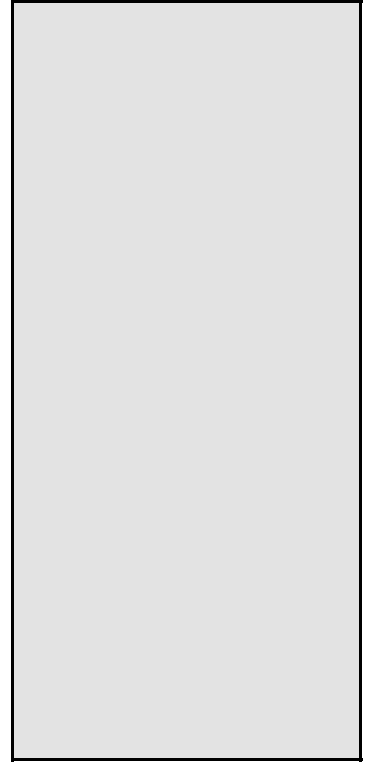
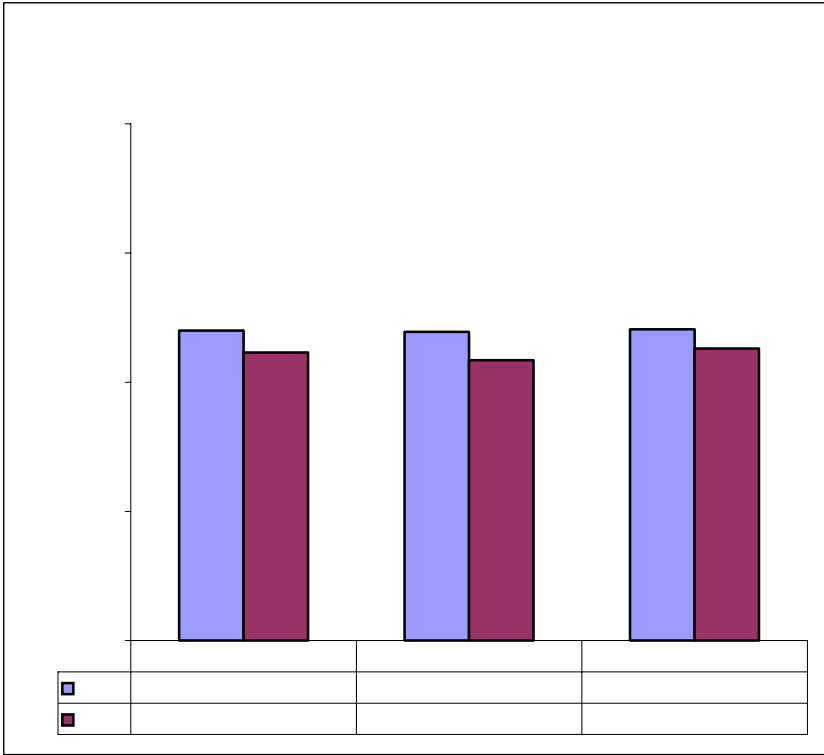
UMC UMKC UMR UMSL UM UMC UMKC UMR UMSL UM

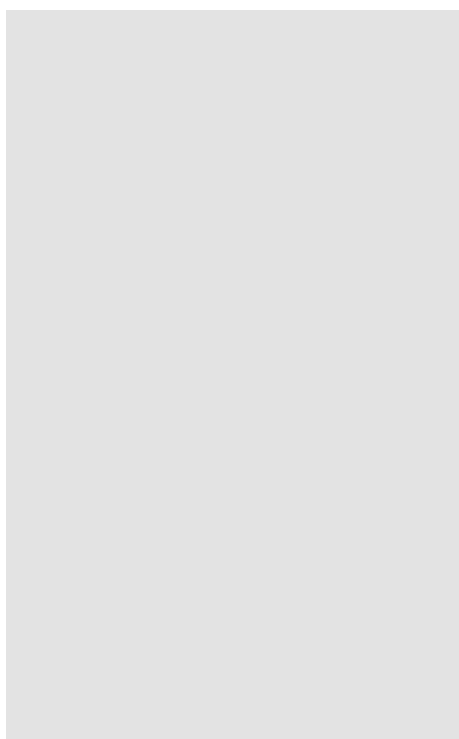
V. Response Rate

	UMC	UMKC	UMR	UMSL	Total
Emailed Surveys	3,208	2,411	892	566	6,263
Undeliverable	21	6	36	103	166
Potential Response Pool	3,187	2,405	856	463	6,097
Returned Surveys	1,362	454	429	259	2,504
Response Rate	42.7%	18.9%	50.1%	55.9%	41.1%

VI. Benchmarks

The UM GSS 200 benchmark analysis are based on the 2,504 valid responses. Benchmarks are computed by averaging the mean scores on the corresponding items. All





Academic Challenge Active Learning Interact w/ Faculty Enrich Learn Support Career Prep Academic Develop Personal Develop Overall Develop Satisfaction

Program

Gender

Ethnicity

Full-Time St.

VII: GSS 2002 Benchmarks by Demographic Variables: UM and UMR

Academic Active Interact w/ Enrich Support Career Prep Academic Personal Overall Satis-
Challenge Learning Faculty Learn Support Career Prep Develop Develop Develop faction

Career Aspiration

Status in Program

VIII: GSS 2002 Mean and Standard Deviation

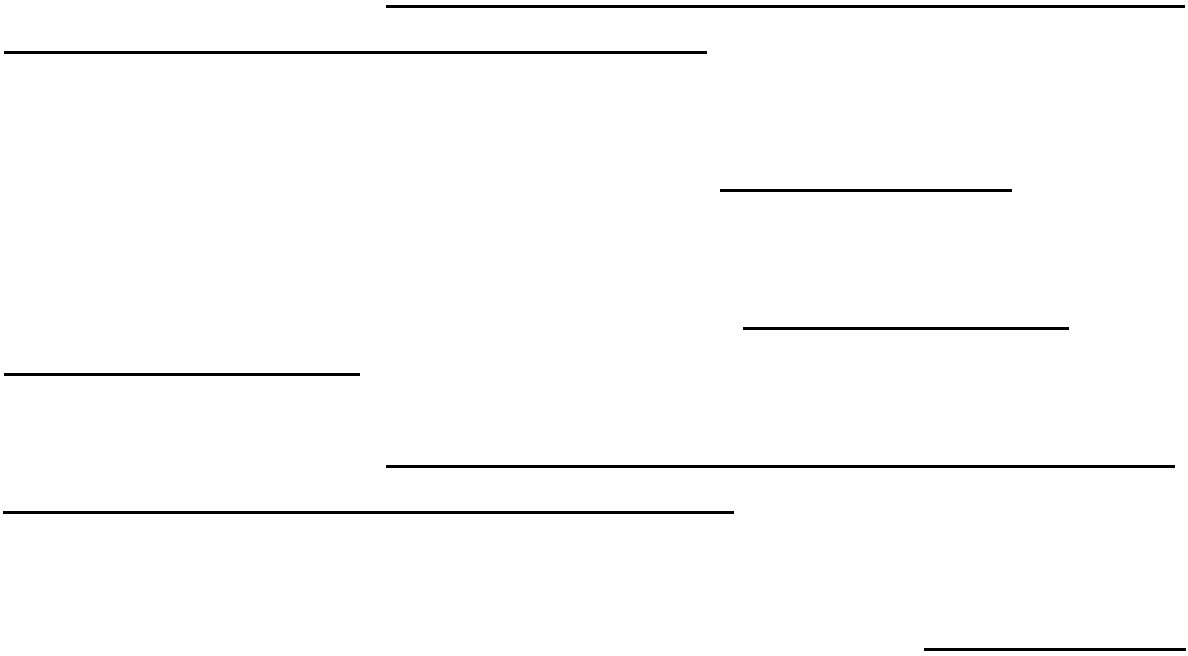
Doctoral Students

Master's Students

Mean	Std	Mean	Std	Mean	Std	Mean	Std
------	-----	------	-----	------	-----	------	-----

IX: GSS 2002 Frequency Distributions

	Doctoral Students				Master's Students		



*Directions: In this first part of the survey, we want to ask about the **learning environment** in your graduate program. When you answer, please consider your complete experience as a University of Missouri graduate student, rather than only a particular semester or year. Please read each item and select the one response, which best describes your graduate program.*

Directions: In this part of the survey, we want to ask about career preparation in your entire University of Missouri graduate program experience rather than one particular semester or year. Please read each statement and select the one response which best describes your program.

Directions: In this part of the survey, we want to ask about academic and personal development over the entire length of your University of Missouri graduate program rather than one particular semester or year. Please read each statement and select the

Directions: In this part of the survey, we want to ask about your university experience in your entire University of Missouri graduate program rather than one particular semester or year. Please read each statement and select one response, which best describes your agreement with the statement.

Directions: For the following items, please select the one appropriate response.

