

**ENROLLMENT SUMMARY REPORT  
FALL 2012**

Dr. La Shonda Carter-Boone  
Senior Institutional Research Analyst

Office of Institutional Research & Planning  
714 Lewis Hall  
University of Missouri System

November 2012

IR&P 2012, Report 2

<http://www.umsystem.edu/ums/departments/fa/planning/>

## FALL 2012 ENROLLMENT SUMMARY

### Executive Summary

This report summarizes the status and trends in fall enrollment at the University of Missouri's four campuses. The report includes information about enrollment, full-time equivalence, new students on campus, undergraduate transfer students, full/part-

## Technical Notes

These tables provide counts of students enrolled in the fall of 2012 on-schedule credit courses at the four campuses of the University of Missouri. Five and ten-year trend data are included in the tables for comparison purposes. The data used in this report were generated from the EMSAS Fall Enrollment files, which are submitted to the Missouri Department of Higher Education (MDHE) each fall. Data included in EMSAS files were prepared in the admissions and registration offices at the respective campuses. The data are counts as of the census date at each campus, which is defined as the end of the fourth week of classes for the fall session. The source data are based on the reporting guidelines and definitions of the Missouri Department of Higher Education (MDHE) and the National Center for Educational Statistics (NCES).

Tables in the Table 2 series (2.0-2.4) include counts of on- and off-campus students. The columns titled "On-Campus", according to the MDHE guidelines, include students enrolled geographically on campus and students in the Graduate Engineering (Residence) Centers. All other students are counted in the columns headed "Off-Campus", which include students enrolled in extension courses and students that receive H.S. advanced credit from the Kansas City and St. Louis campuses. The tables of the Table 2 series also include full-time equivalence (FTE) counts.

Tables in the Table 4 series (4.0a-4.4b) include counts of resident and non-resident students by level and course load (full-time vs. part-time).

### Definitions of FTE:

Undergraduate FTE = Total Student Credit Hours/15

Graduate FTE = Total Student Credit Hours/12

Dentistry FTE = Headcount

Law FTE = Total Student Credit Hours/15

UMC Medicine FTE = Headcount

UMKC Medicine FTE = Headcount

Optometry FTE = Headcount

Pharmacy FTE = Headcount

Vet Medicine FTE = Headcount

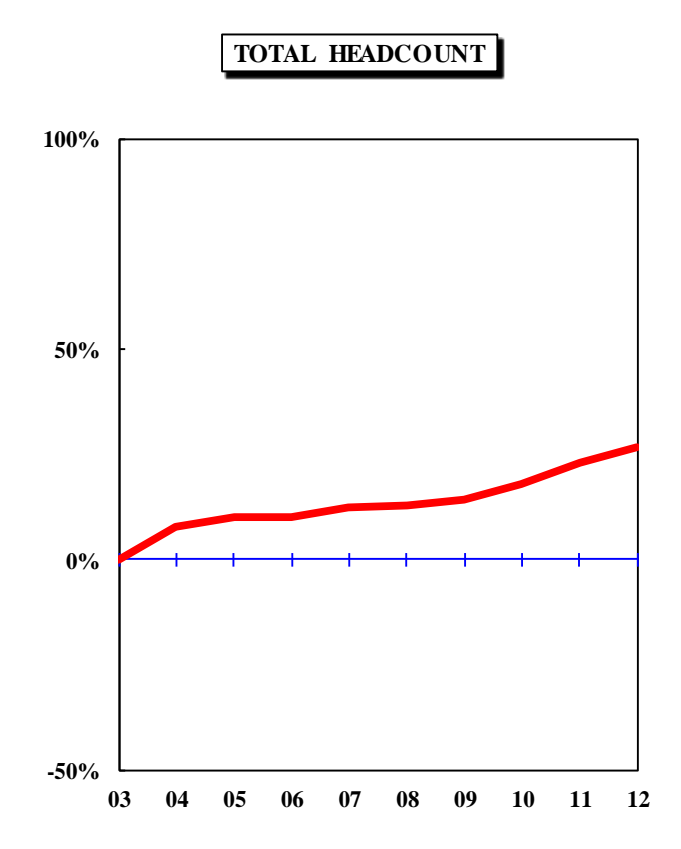
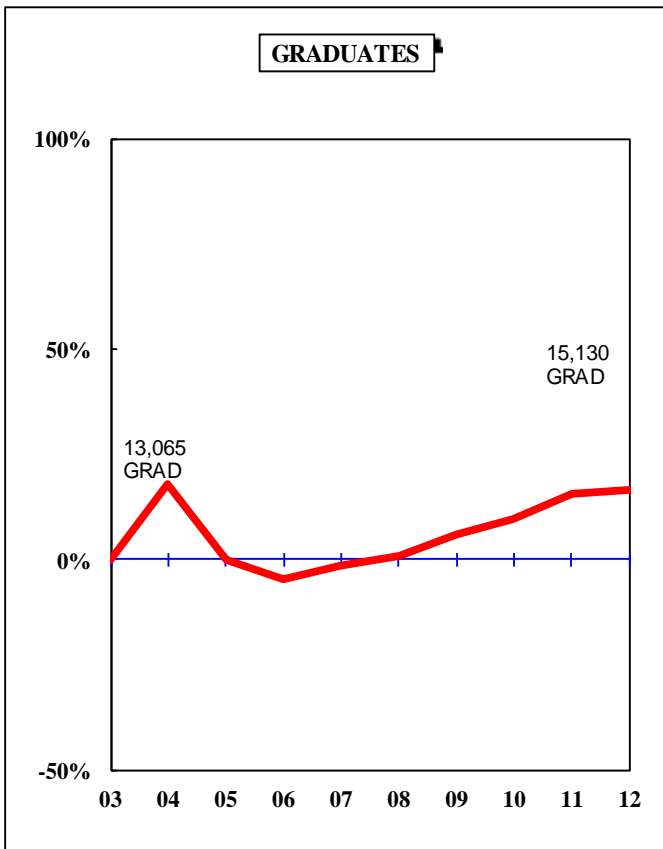
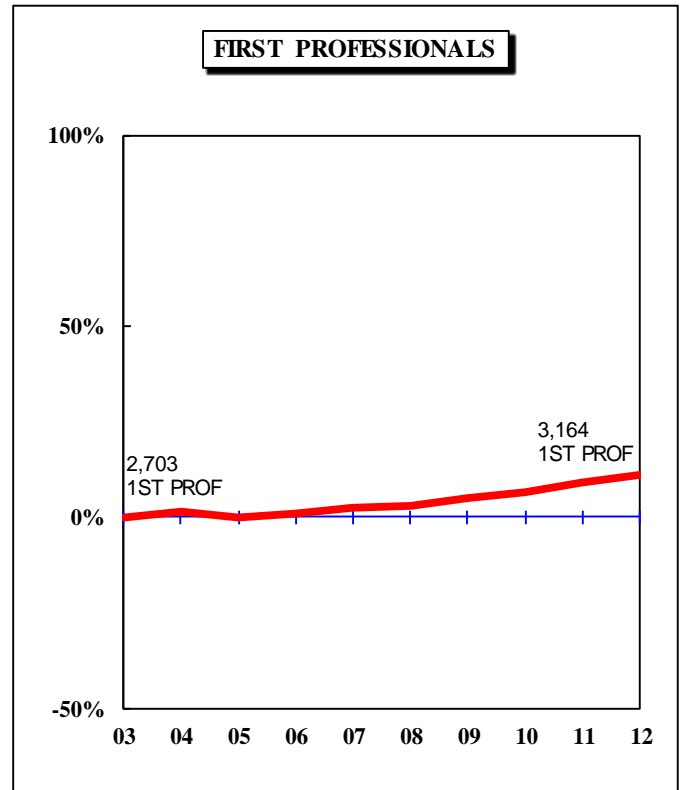
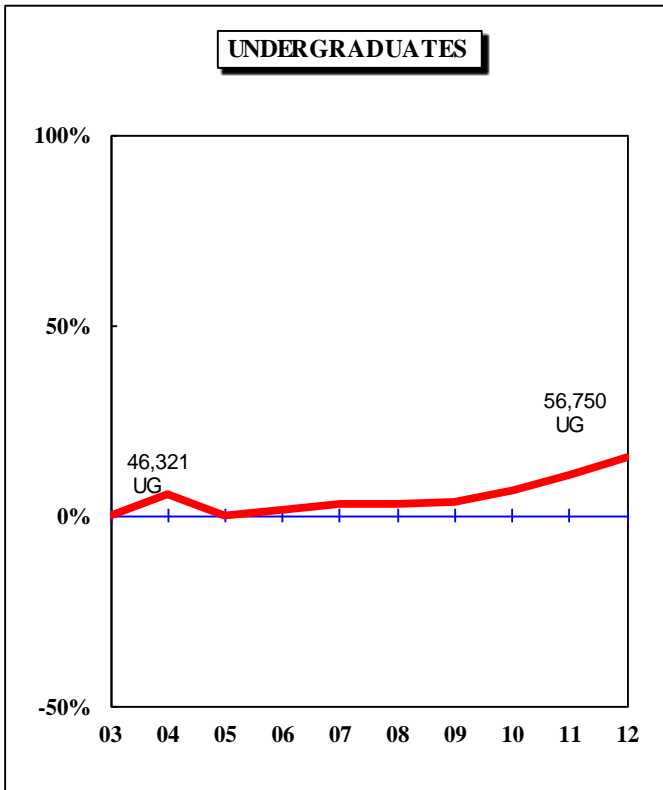
## Caveats

First- and second-year students in the Medicine MD program at UMKC are included in the undergraduate counts of the Table 2 and Table 4 series.

Enrollment counts for students in "Off-Schedule" courses, which include intersession courses, short courses, Video Credit courses, and other courses which begin and end on dates other than those for the regular academic semester, are accumulated during the term in which the courses began and are reported the semester following their end date.

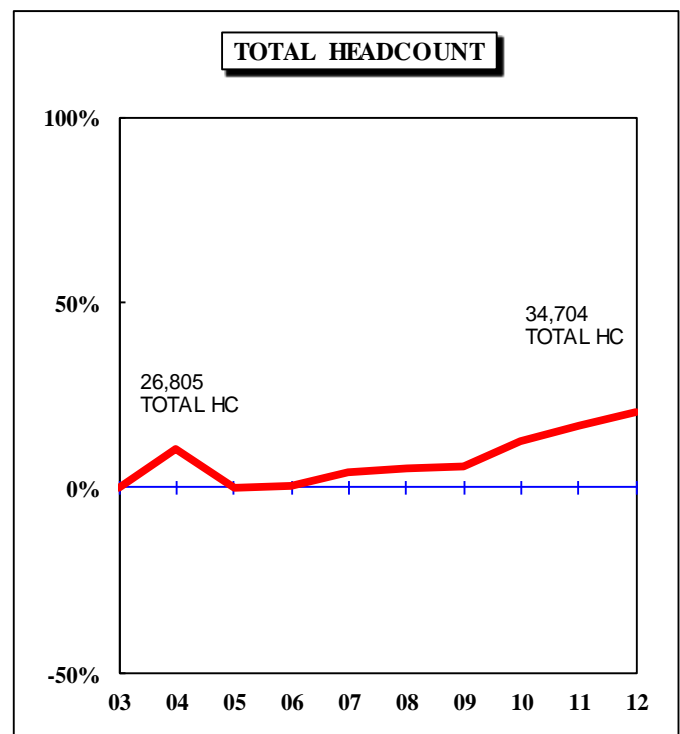
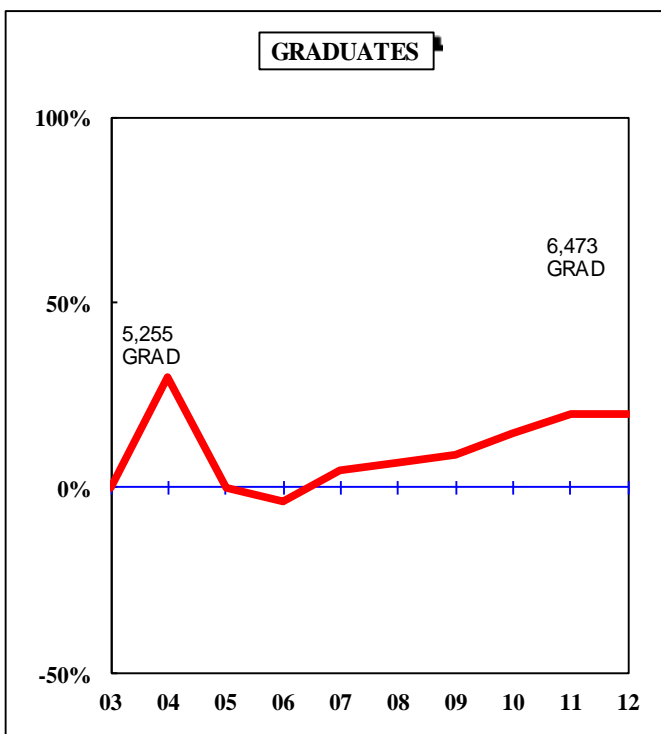
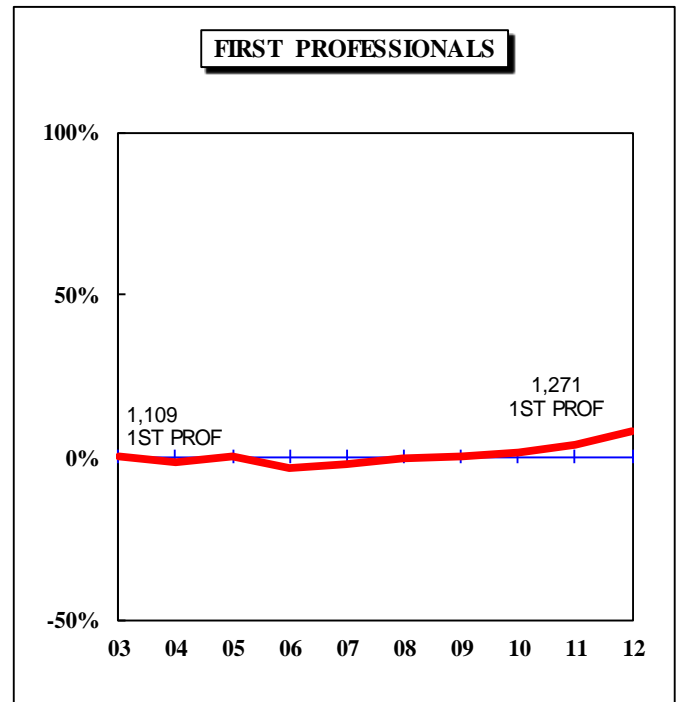
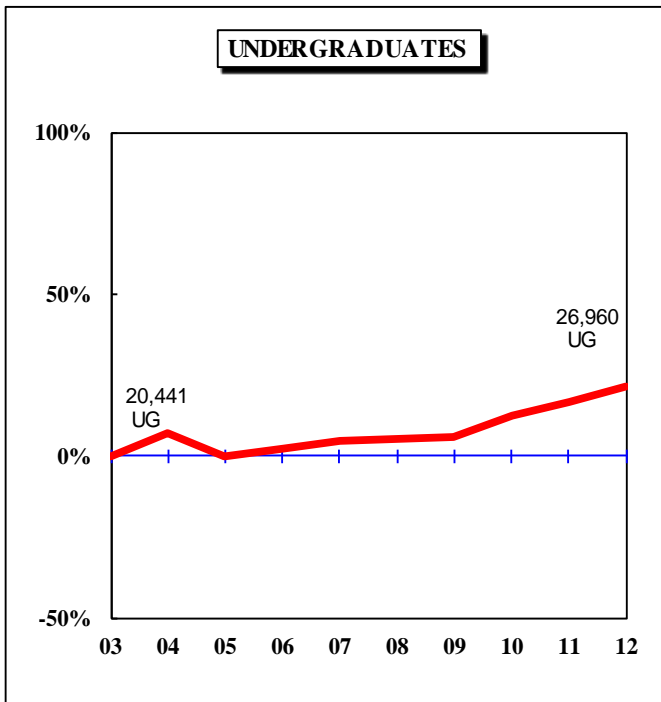
**Figure 1: Rate of Change in Fall Headcount by Student Level and Campus, Fall 2003 to Fall 2012**

**UNIVERSITY OF MISSOURI SYSTEM**



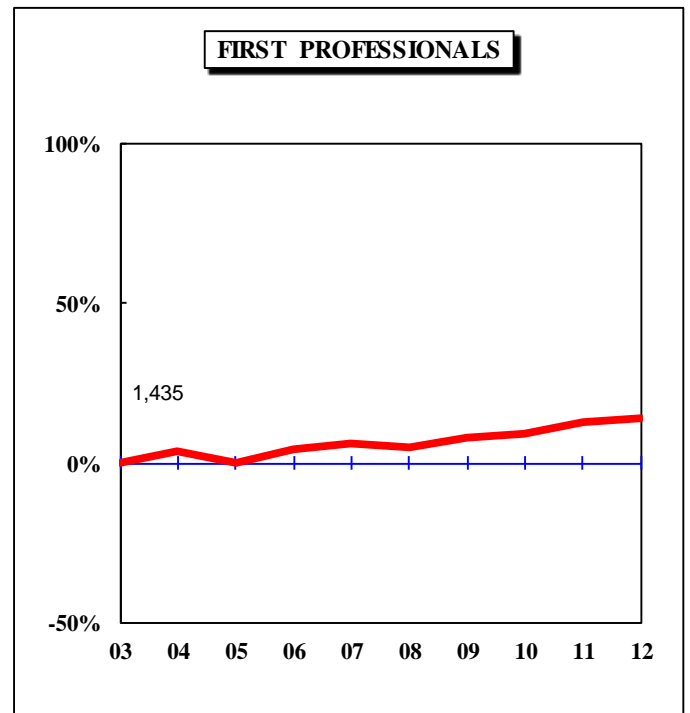
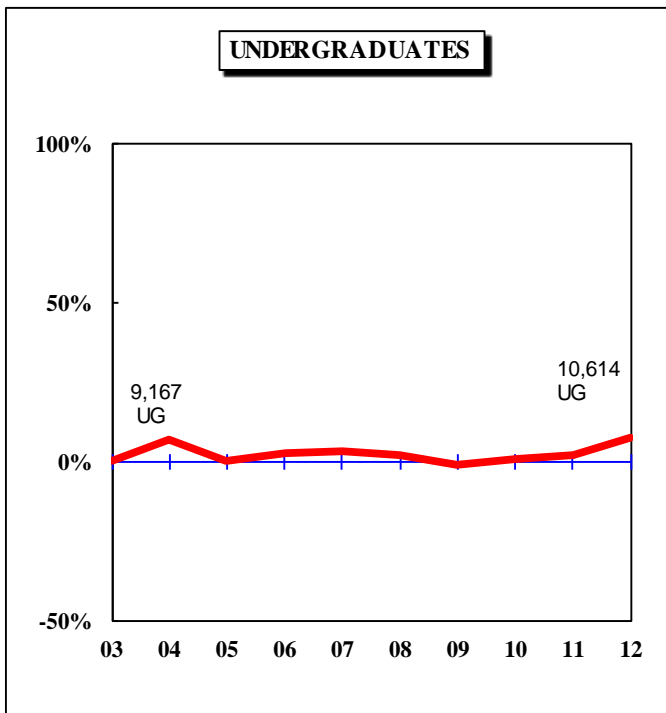
**Figure 1.1: Rate of Change in Fall Headcount by Student Level and Campus, Fall 2003 to Fall 2012**

**UNIVERSITY OF MISSOURI-COLUMBIA**



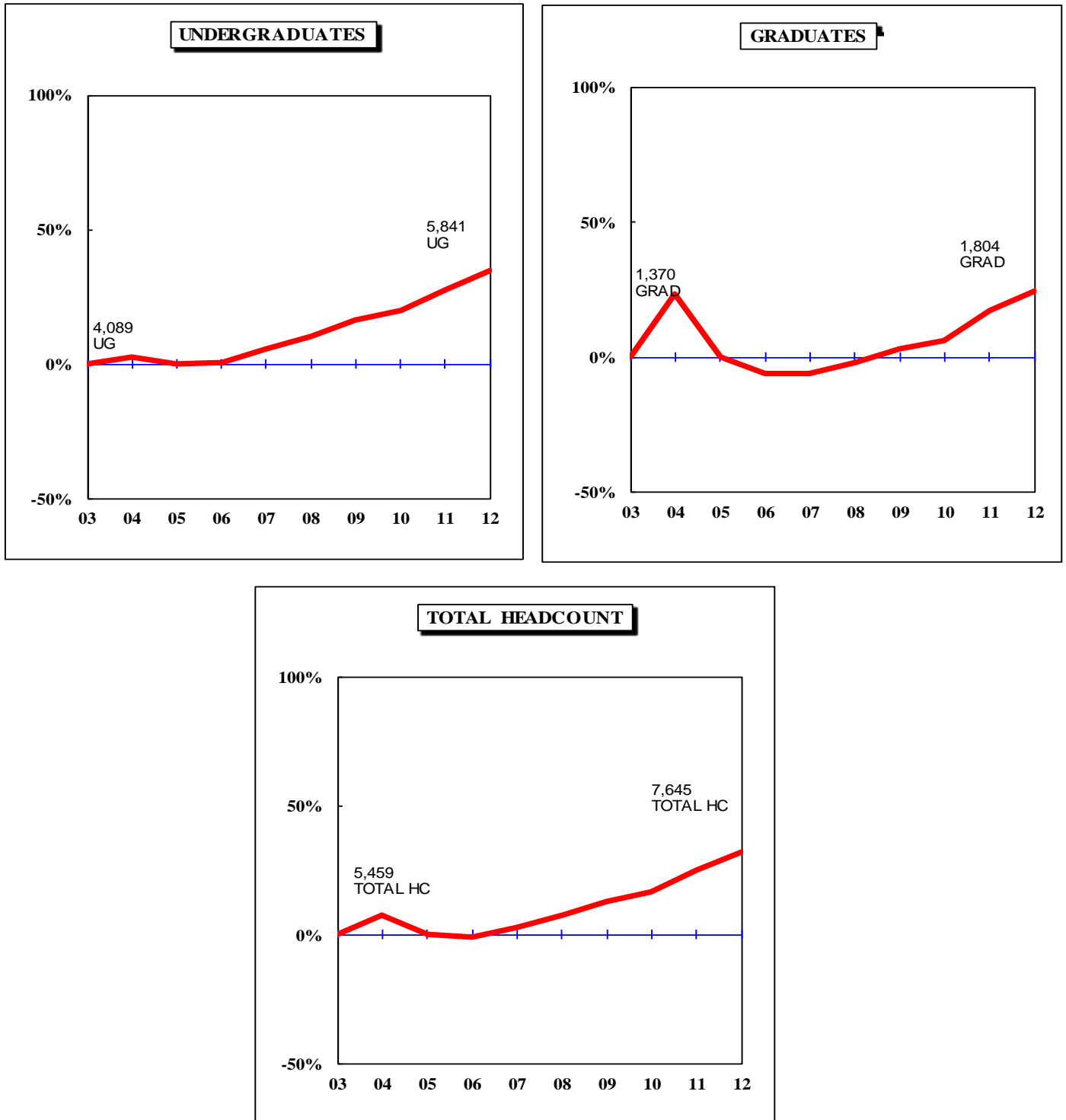
**Figure 1.2: Rate of Change in Fall Headcount by Student Level and Campus, Fall 2003 to Fall 2012**

**UNIVERSITY OF MISSOURI-KANSAS CITY**



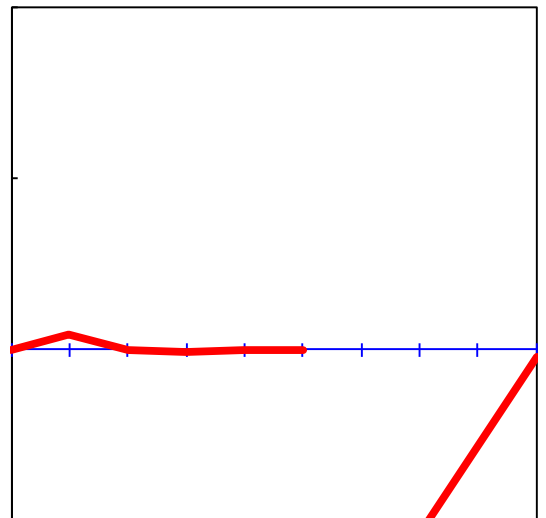
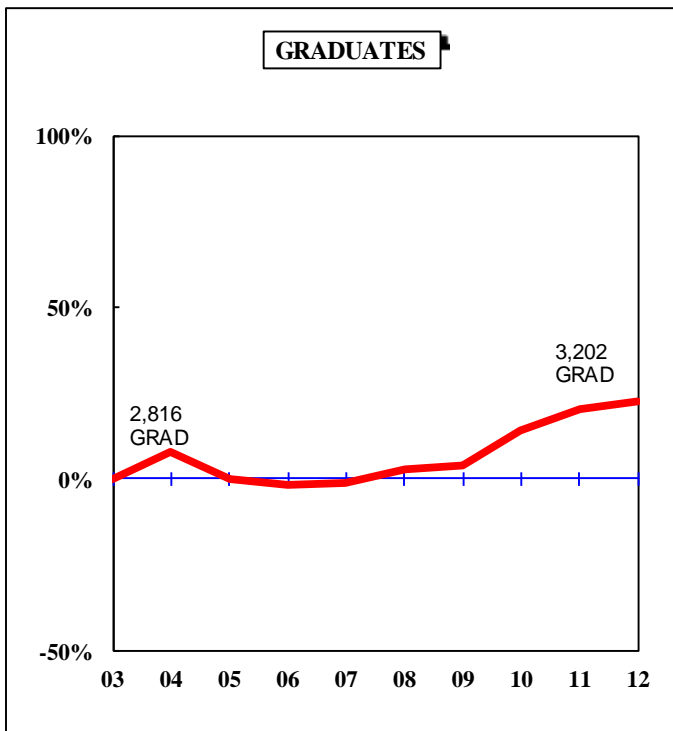
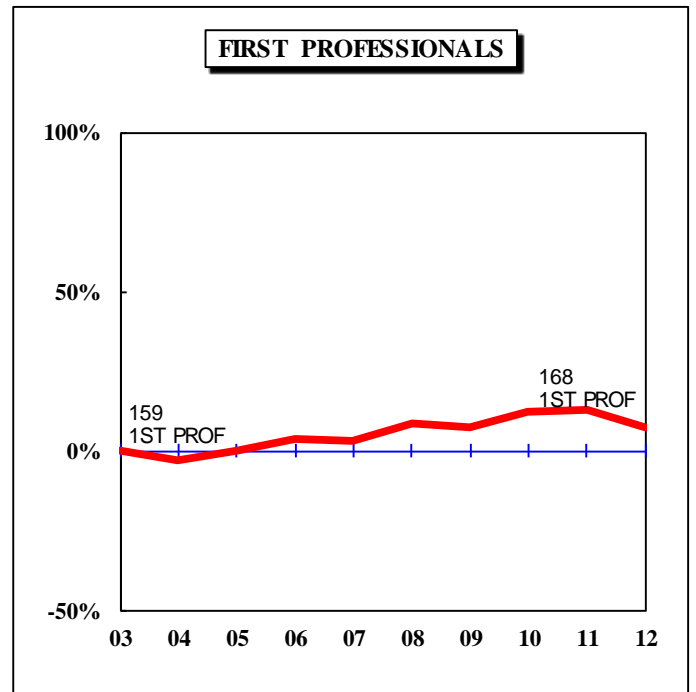
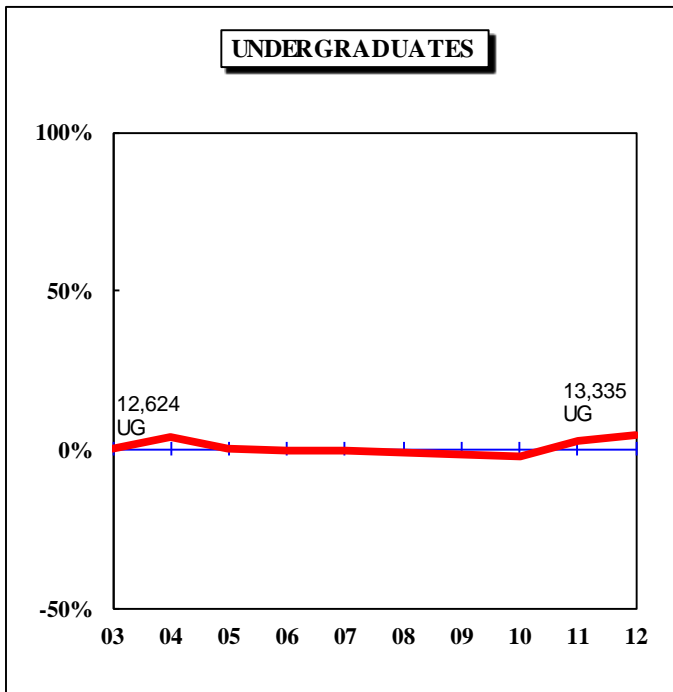
**Figure 1.3: Rate of Change in Fall Headcount by Student Level and Campus, Fall 2003 to Fall 2012**

**MISSOURI S&T**



**Figure 1.4: Rate of Change in Fall Headcount by Student Level and Campus, Fall 2003 to Fall 2012**

**UNIVERSITY OF MISSOURI-ST. LOUIS**







### Full-time Equivalent History by Campus, 2003 to 2012

<b>Campus</b>	<b>2003</b>	<b>2004</b>	<b>2005</b>	<b>2006</b>	<b>2007</b>	<b>2008</b>	<b>2009</b>	<b>2010</b>	<b>2011</b>	<b>2012</b>
Columbia	22,556.0	23,000.0	23,703.6	24,182.7	24,280.4	25,840.2	26,797.4	27,838.4	29,020.4	29,845.0
Kansas City	9,290.0	9,607.7	9,795.3	9,797.9	9,843.8	10,152.4	10,597.5	11,042.8	11,255.7	11,387.0
MO S&T	4,604.0	4,594.1	4,799.9	4,982.6	5,323.0	5,452.9	5,860.4	6,162.2	6,376.5	6,453.0
St. Louis	9,224.0	9,162.0	9,451.9	9,467.5	9,546.9	9,578.5	10,031.8	10,227.7	10,188.8	10,121.0
<b>Total</b>	<b>45,674.0</b>	<b>46,363.8</b>	<b>47,750.7</b>	<b>48,430.7</b>	<b>48,994.0</b>	<b>51,023.9</b>	<b>53,287.1</b>	<b>55,271.1</b>	<b>56,841.4</b>	<b>57,806.0</b>

(Totals may not add due to rounding.)

**Table 2.0 Headcounts, Full-time Equivalence, and Student Credit Hours by Location, Fall 2008 to Fall 2012**

	FS08	FS09	FS10	FS11	FS12	FS08	FS09	FS10	FS11	FS12	FS08	FS09	FS10	FS11	FS12	5-yr. Change
Headcount by Student Level																
<b>Undergraduate</b>																
Fresh & Soph DS	19,280	19,833	20,398	21,047	21,450	28	46	66	60	64	19,308	19,879	20,464	21,107	21,514	11%
Junior & Senior DS	23,990	25,161	26,464	27,168	27,723	254	283	389	505	532	24,244	25,444	26,853	27,673	28,255	17%
Nondegree	<u>861</u>	<u>859</u>	<u>822</u>	<u>926</u>	<u>1,038</u>	<u>5,097</u>	<u>5,170</u>	<u>5,219</u>	<u>5,230</u>	<u>5,943</u>	<u>5,958</u>	<u>6,029</u>	<u>6,041</u>	<u>6,156</u>	<u>6,981</u>	<u>17%</u>
Total Undergraduate	44,131	45,853	47,684	49,141	50,211	5,379	5,499	5,674	5,795	6,539	49,510	51,352	53,358	54,936	56,750	15%
<b>First Professional</b>																

**Table 2.1 Headcounts, Full-time Equivalence, and Student Credit Hours by Location, Fall 2008 to Fall 2012**

	FS08	FS09	FS10	FS11	FS12	FS08	FS09	FS10	FS11	FS12	FS08	FS09	FS10	FS11	FS12	5-yr. Change
<b>Headcount by Student Level</b>																
<b>Undergraduate</b>																
Fresh & Soph DS	11,631	12,069	12,548	13,088	13,467	22	25	21	24	35	11,653	12,094	12,569	13,112	13,502	16%
Junior & Senior DS	10,827	11,247	11,811	12,304	12,754	168	187	222	270	333	10,995	11,434	12,033	12,574	13,087	19%
Nondegree	<u>229</u>	<u>200</u>	<u>166</u>	<u>233</u>	<u>289</u>	<u>103</u>	<u>71</u>	<u>66</u>	<u>73</u>	<u>82</u>	<u>332</u>	<u>271</u>	<u>232</u>	<u>306</u>	<u>371</u>	<u>12%</u>
Total Undergraduate	22,687	23,516	24,525	25,625	26,510	293	283	309	367	450	22,980	23,799	24,834	25,992	26,960	17%
<b>First Professional</b>																
Law (JD)	453	444	443	431	416	0	0	0	0	0	453	444	443	431	416	-8%
Medicine (MD)	387	385	388	392	402	0	0	0	0	0	387	385	388	392	402	4%
Vet. Med. (DVM)	<u>286</u>	<u>321</u>	<u>366</u>	<u>413</u>	<u>452</u>	<u>0</u>	<u>0</u>	<u>0</u>	<u>0</u>	<u>1</u>	<u>286</u>	<u>321</u>	<u>366</u>	<u>413</u>	<u>453</u>	<u>58%</u>
Total First Professional	1,126	1,150	1,197	1,236	1,270	0	0	0	0	1	1,126	1,150	1,197	1,236	1,271	13%
<b>Graduate</b>																
Masters & Ed. Spec.	2,261	2,243	2,287	2,408	2,423	962	1,238	1,190	1,126	1,058	3,223	3,481	3,477	3,534	3,481	8%
Doctoral	2,051	2,172	2,178	2,288	2,189	81	85	147	227	340	2,132	2,257	2,325	2,515	2,529	19%
Nondegree	<u>250</u>	<u>166</u>	<u>186</u>	<u>148</u>	<u>130</u>	<u>419</u>	<u>384</u>	<u>322</u>	<u>337</u>	<u>333</u>	<u>669</u>	<u>550</u>	<u>508</u>	<u>485</u>	<u>463</u>	<u>-31%</u>
Total Graduate	4,562	4,581	4,651	4,844	4,742	1,462	1,707	1,659	1,690	1,731	6,024	6,288	6,310	6,534	6,473	7%
<b>Grand Total Headcount</b>	<b>28,375</b>	<b>29,247</b>	<b>30,373</b>	<b>31,705</b>	<b>32,522</b>	<b>1,755</b>	<b>1,990</b>	<b>1,968</b>	<b>2,057</b>	<b>2,182</b>	<b>30,130</b>	<b>31,237</b>	<b>32,341</b>	<b>33,762</b>	<b>34,704</b>	<b>15%</b>
<b>FTE Enrollments by Student Level</b>																
Undergraduate	21,097.0	21,837.7	22,785.4	23,707.6	24,505.0	99.7	105.0	113.9	132.3	171.5	21,196.6	21,942.7	22,899.3	23,839.9	24,676.5	16%
First Professional	1,108.2	1,134.3	1,174.6	1,214.9	1,246.7	0.0	0.0	0.0	0.0	1.0	1,108.2	1,134.3	1,174.6	1,214.9	1,247.7	13%
Graduate	<u>2,951.1</u>	<u>2,996.1</u>	<u>3,071.5</u>	<u>3,257.0</u>	<u>3,224.3</u>	<u>584.3</u>	<u>724.3</u>	<u>693.0</u>	<u>708.6</u>	<u>696.4</u>	<u>3,535.3</u>	<u>3,720.4</u>	<u>3,764.5</u>	<u>3,965.6</u>	<u>3,920.7</u>	<u>11%</u>
Total FTE	25,156.3	25,968.2	27,031.5	28,179.5	28,976.0	683.9	829.3	806.9	840.9	868.9	25,840.2	26,797.4	27,838.4	29,020.4	29,844.9	15%
<b>SCH Produced by Student Level</b>																
Undergraduate	316,454.5	327,565.5	341,780.5	355,613.5	367,575.0	1,495.0	1,575.0	1,709.0	1,985.0	2,573.0	317,949.5	329,140.5	343,489.5	357,598.5	370,148.0	16%
First Professional	16,595.5	17,898.5	18,820.5	19,304.5	19,615.5	0.0	0.0	0.0	0.0	1.0	16,595.5	17,898.5	18,820.5	19,304.5	19,616.5	18%
Graduate	<u>35,413.0</u>	<u>35,953.5</u>	<u>36,858.0</u>	<u>39,084.5</u>	<u>38,692.0</u>	<u>7,011.0</u>	<u>8,691.0</u>	<u>8,315.5</u>	<u>8,503.0</u>	<u>8,357.0</u>	<u>42,424.0</u>	<u>44,644.5</u>	<u>45,173.5</u>	<u>47,587.5</u>	<u>47,049.0</u>	<u>11%</u>
Total SCH	368,463.0	381,417.5	397,459.0	414,002.5	425,882.5	8,506.0	10,266.0	10,024.5	10,488.0	10,931.0	376,969.0	391,683.5	407,483.5	424,490.5	436,813.5	16%

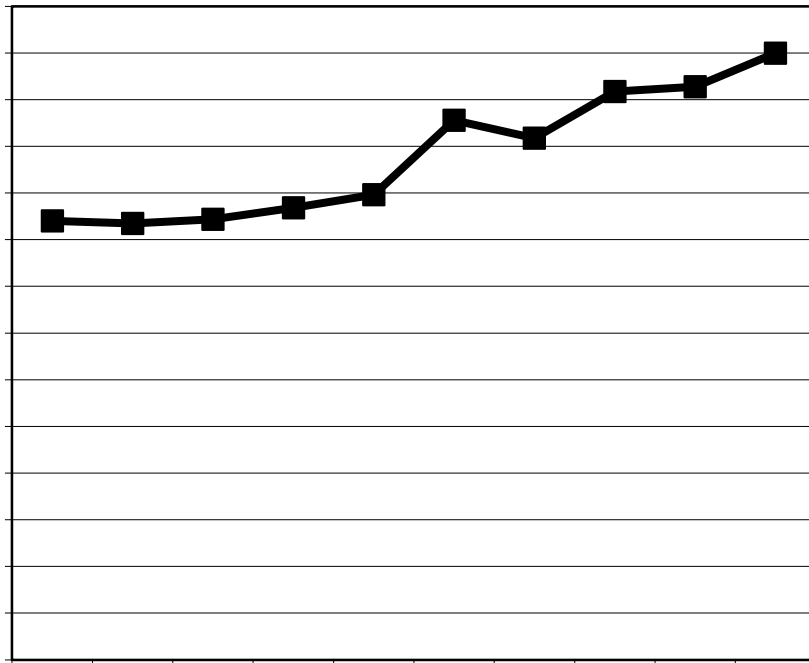
**Table 2.2 Headcounts, Full-time Equivalence, and Student Credit Hours by Location, Fall 2008 to Fall 2012**

	FS08	FS09	FS10	FS11	FS12	FS08	FS09	FS10	FS11	FS12	FS08	FS09	FS10	FS11	FS12	5-yr. Change
<b>Headcount by Student Level</b>																
<b>Undergraduate</b>																
Fresh & Soph DS	3,017	3,126	3,241	3,346	3,493	0	0	0	0	0	3,017	3,126	3,241	3,346	3,493	16%
Junior & Senior DS	4,330	4,591	4,943	5,086	4,937	4	4	2	27	17	4,334	4,595	4,945	5,113	4,954	14%
Nondegree	<u>307</u>	<u>313</u>	<u>268</u>	<u>269</u>	<u>306</u>	<u>1,603</u>	<u>1,347</u>	<u>1,396</u>	<u>1,394</u>	<u>1,861</u>	<u>1,910</u>	<u>1,660</u>	<u>1,664</u>	<u>1,663</u>	<u>2,167</u>	13%
Total Undergraduate	7,654	8,030	8,452	8,701	8,736	1,607	1,351	1,398	1,421	1,878	9,261	9,381	9,850	10,122	10,614	15%
<b>First Professional</b>																
Dentistry (DDS)	399	401	405	420	425	0	0	0	0	0	399	401	405	420	425	7%
Law (JD)	492	499	489	470	463	0	0	0	0	0	492	499	489	470	463	-6%
Medicine (MD)	380	384	392	406	416	0	0	0	0	0	380	384	392	406	416	9%
Pharmacy (DPharm)	<u>298</u>	<u>339</u>	<u>352</u>	<u>283</u>	<u>328</u>	<u>0</u>	<u>0</u>	<u>0</u>	<u>80</u>	<u>93</u>	<u>298</u>	<u>339</u>	<u>352</u>	<u>363</u>	<u>421</u>	41%
Total First Professional	1,569	1,623	1,638	1,579	1,632	0	0	0	80	93	1,569	1,623	1,638	1,659	1,725	10%
<b>Graduate</b>																
Masters & Ed. Spec.	2,670	2,801	2,890	2,709	2,638	53	32	3	80	77	2,723	2,833	2,893	2,789	2,715	0%
Doctoral	624	656	664	648	639	7	0	0	0	0	631	656	664	648	639	1%
Nondegree	<u>297</u>	<u>306</u>	<u>214</u>	<u>255</u>	<u>297</u>	<u>0</u>	<u>0</u>	<u>0</u>	<u>0</u>	<u>0</u>	<u>297</u>	<u>306</u>	<u>214</u>	<u>255</u>	<u>297</u>	0%
Total Graduate	3,591	3,763	3,768	3,612	3,574	60	32	3	80	77	3,651	3,795	3,771	3,692	3,651	0%
<b>Grand Total Headcount</b>	12,814	13,416	13,858	13,892	13,942	1,667	1,383	1,401	1,581	2,048	14,481	14,799	15,259	15,473	15,990	10%
<b>FTE Enrollments by Student Level</b>																
Undergraduate	6,272.8	6,647.9	7,047.1	7,214.4	7,233.9	389.3	324.5	347.5	371.3	480.8	6,662.1	6,972.4	7,394.6	7,585.7	7,715	16%
First Professional	1,554.7	1,603.9	1,618.5	1,558.5	1,613.9	0.0	0.0	0.0	80.0	93.0	1,554.7	1,603.9	1,618.5	1,638.5	1,707	10%
Graduate	<u>1,902.4</u>	<u>2,006.6</u>	<u>2,028.0</u>	<u>1,990.1</u>	<u>1,927.0</u>	<u>33.3</u>	<u>14.6</u>	<u>1.6</u>	<u>41.3</u>	<u>38.1</u>	<u>1,935.7</u>	<u>2,021.2</u>	<u>2,029.6</u>	<u>2,031.5</u>	<u>1,965</u>	2%
Total FTE	9,729.9	10,258.5	10,693.6	10,763.1	10,774.8	422.5	339.1	349.1	492.7	611.9	10,152.4	10,597.5	11,042.7	11,255.7	11,387	12%
<b>SCH Produced by Student Level</b>																
Undergraduate	94,092.0	99,719.0	105,707.0	108,216.0	108,509.1	5,839.0	4,867.0	5,213.0	5,570.1	7,212.6	99,931.0	104,586.0	110,920.0			

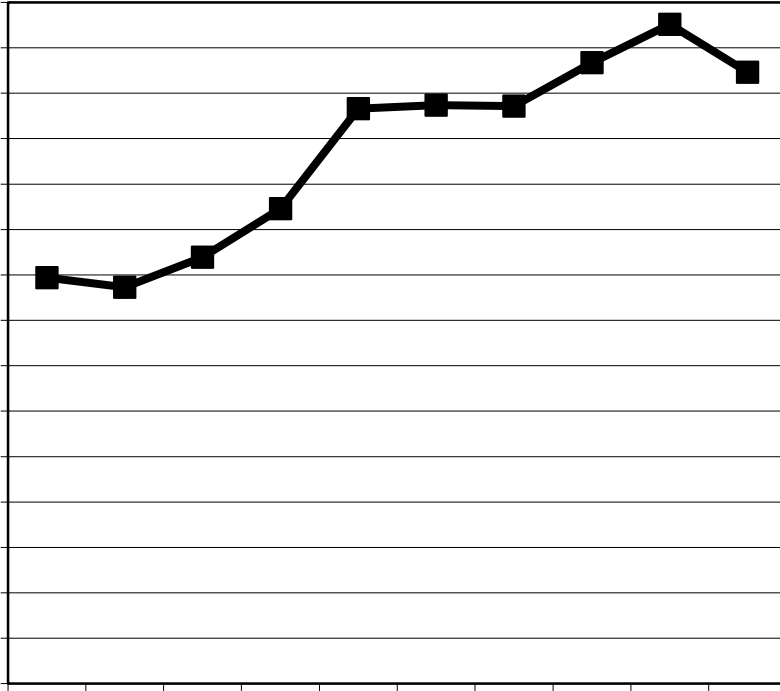
04/07/19 09:33:20 (o)19(n)19(d)19(e)19(a)19(r)26(e)19(e)13W\* 4(d) -31(bv)162.4 117.14 Tm[1]19(.)-28(9)19(0)19(2)19(.)-28(4)ITJETET3W\* 4(d) -3B950.219d3W\* al FirET3W\* 4(d) -3B90.27

**Table 2.3 Headcounts, Full-time Equivalence, and Student Credit Hours by Location, Fall 2008 to Fall 2012**



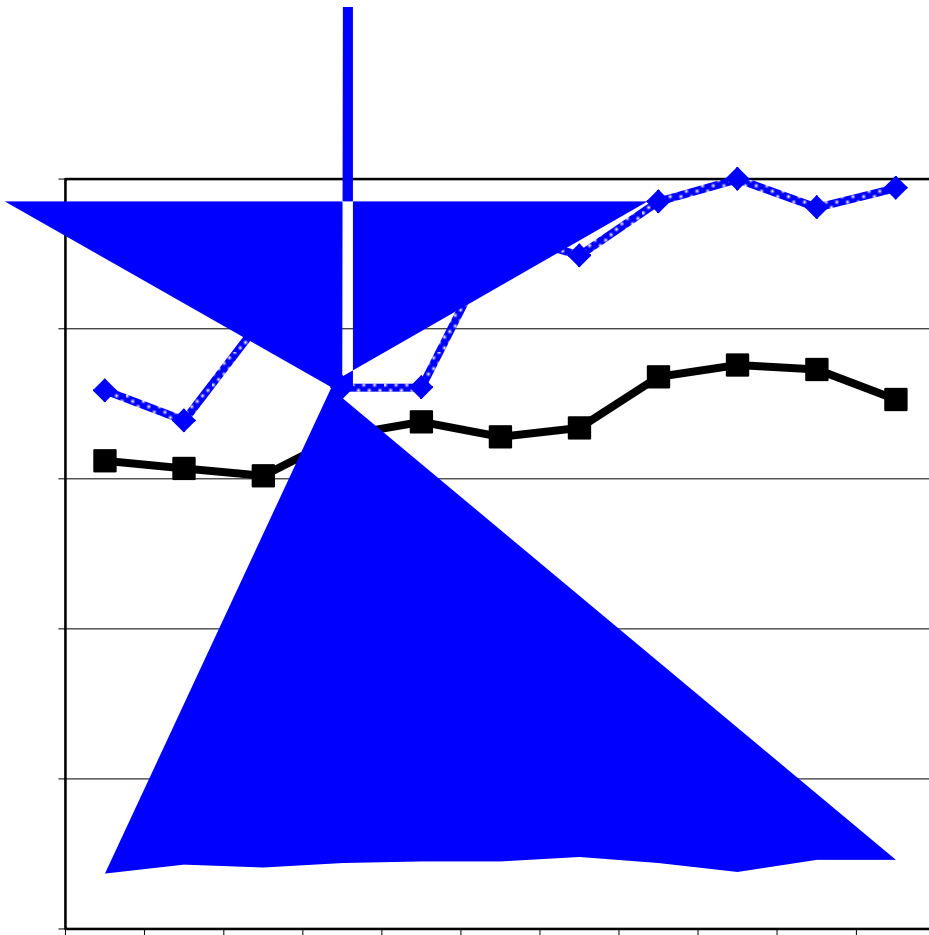






**New Graduate Student History by Campus, 2003 to 2012**

<b>Campus</b>	<b>2003</b>	<b>2004</b>	<b>2005</b>	<b>2006</b>	<b>2007</b>	<b>2008</b>	<b>2009</b>	<b>2010</b>	<b>2011</b>	<b>2012</b>
Columbia	894	873	939	1,046	1,266	1,274	1,272	1,367	1452	1346
Kansas City	911	848	882	826	973	1,005	1,005	1,076	922	963
MO S&T	254	212	228	251	250	245	290	305	248	219
St. Louis	568	570	603	674	652	736	792	775	720	648
<b>Total</b>	<b>2,627</b>	<b>2,503</b>	<b>2,652</b>	<b>2,797</b>	<b>3,141</b>	<b>3,260</b>	<b>3,359</b>	<b>3,523</b>	<b>3,342</b>	<b>3,176</b>



**New First Professional Student History By Campus, 2003 to 2012**

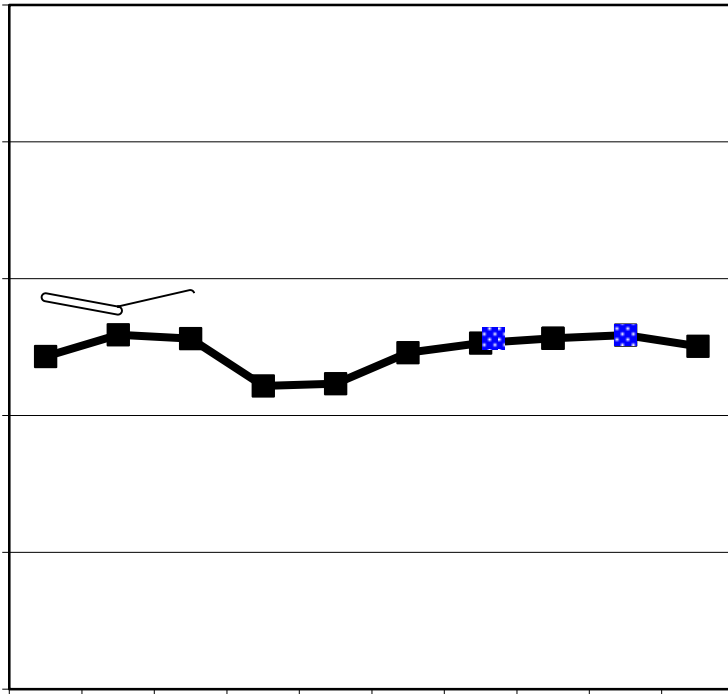
<b>Campus</b>	<b>2002</b>	<b>2003</b>	<b>2004</b>	<b>2005</b>	<b>2006</b>	<b>2007</b>	<b>2008</b>	<b>2009</b>	<b>2010</b>	<b>2011</b>	<b>2012</b>
Columbia	312	307	302	329	338	328	334	368	376	373	353
Kansas City	359	339	408	361	361	465	449	485	500	481	494
St. Louis	37	43	41	44	45	45	48	44	38	46	46
<b>Total</b>	<b>708</b>	<b>689</b>	<b>751</b>	<b>734</b>	<b>744</b>	<b>838</b>	<b>831</b>	<b>897</b>	<b>914</b>	<b>900</b>	<b>893</b>

**Table 3. On-Campus New Student Headcount, Fall 2008 - Fall 2012**

		2008	2009	2010	2011	2012	5 yr. Change
<b>Columbia</b>							
<b>Freshmen</b>							
	Degree-Seeking	5,780	5,589	6,087	6,137	6,498	12%
	Non Degree-Seeking	0	0	0	0	0	
<b>Undergraduate Transfers</b>							
	Degree-Seeking	1,077	1,108	1,159	1,261	1,207	12%
	Non Degree-Seeking	153	157	123	33	46	-70%
<b>Professional</b>							
	Degree-Seeking	334	368	376	373	353	6%
<b>Graduate</b>							
	Degree-Seeking	1,167	1,169	1,248	1,353	1,257	8%
	Non Degree-Seeking	107	103	119	99	89	-17%
<b>Kansas City</b>							
<b>Freshmen</b>							
	Degree-Seeking	1,008	1,004	1,145	1,159	1,125	12%
	Non Degree-Seeking	0	3	2	2	0	
<b>Undergraduate Transfers</b>							
	Degree-Seeking	1,238	1,449	1,554	1,462	1,459	18%
	Non Degree-Seeking	0	1	2	0	0	
<b>Professional</b>							
	Degree-Seeking	447	481	500	481	494	11%
	Non Degree-Seeking	2	4	0	0	0	-100%
<b>Graduate</b>							
	Degree-Seeking	1,005	1,004	1,076	922	963	-4%
	Non Degree-Seeking	0	1	0	0	0	
<b>Missouri S&amp;T</b>							
<b>Freshmen</b>							
	Degree-Seeking	1,045	1,108	1,149	1,096	1,124	8%
	Non Degree-Seeking	10	24	21	5	1	-90%
<b>Undergraduate Transfers</b>							
	Degree-Seeking	272	292	341	326	345	27%
	Non Degree-Seeking	2	1	1	0	0	
<b>Graduate</b>							
	Degree-Seeking	244	289	296	247	218	-11%
	Non Degree-Seeking	1	1	9	1	1	0%
<b>St Louis</b>							
<b>Freshmen</b>							
	Degree-Seeking	468	525	497	504	546	17%
	Non Degree-Seeking	11	2	5	4	1	-91%
<b>Undergraduate Transfers</b>							
	Degree-Seeking	1,667	1,673	1,696	1,726	1,795	8%
	Non Degree-Seeking	179	172	185	193	174	-3%
<b>Professional</b>							
	Degree-Seeking	48	44	38	46	46	-4%
<b>Graduate</b>							
	Degree-Seeking	685	750	721	670	600	-12%
	Non Degree-Seeking	51	42	54	50	48	-6%

Source: EMSAS Fall Enrollment file

IR&P/LCB 10/31/12



**First-time On-Campus Undergraduate Transfer Student History by Campus, 2003 to 2012**

<b>Campus</b>	<b>2003</b>	<b>2004</b>	<b>2005</b>	<b>2006</b>	<b>2007</b>	<b>2008</b>	<b>2009</b>	<b>2010</b>	<b>2011</b>	<b>2012</b>
Columbia	1,215	1,295	1,281	1,108	1,116	1,230	1,265	1,282	1294	1253
Kansas City	1,432	1,382	1,443	1,343	1,214	1,238	1,450	1,556	1462	1459
MO S&T	263	287	278	252	264	274	293	342	326	345
St. Louis	1,829	1,863	1,912	1,922	2,032	1,846	1,845	1,881	1919	1969
<b>Total</b>	<b>4,739</b>	<b>4,827</b>	<b>4,914</b>	<b>4,625</b>	<b>4,626</b>	<b>4,588</b>	<b>4,853</b>	<b>5,061</b>	<b>5,001</b>	<b>5,026</b>

**Level**

**2008 2009 2010 2011 2012 5 yr. Change**



**Table 4.1a Resident Headcount History by Student Level, Load, and Campus, Fall 2008 to Fall 2012**

<b>Level</b>	<b>2008</b>	<b>2009</b>	<b>2010</b>	<b>2011</b>	<b>2012</b>	<b>5 yr. Change</b>
Undergraduate						
Freshman & Soph DS	9,079	9,099	9,137	9,315	9,191	1%
Junior & Senior DS	8,967	9,294	9,675	9,922	10,046	12%
Nondegree	2	2	1	2	3	50%

▼  
▼  
▼

**Table 4.1b Non-Resident Headcount History by Student Level, Load, and Campus, Fall 2008 to Fall 2012**

<b>Level</b>	<b>2008</b>	<b>2009</b>	<b>2010</b>	<b>2011</b>	<b>2012</b>	<b>5 yr. Change</b>
Undergraduate						
Freshman & Soph DS	2,265	2,658	3,137	3,417	3,923	73%
Junior & Senior DS	1,249	1,274	1,420	1,644	1,886	51%
Nondegree	49	44	53	113	129	163%
Total MU Full-time Non-Resident Undergraduate	3,563	3,976	4,610	5,174	5,938	67%
First Professional						
Law (JD)	40	31	30	18	27	-33%
Medicine (MD)	12	10	16	15	18	50%
Vet. Med (DVM)	27	57	65	69	67	148%
Total MU Full-time Non-Resident 1st Professional	79	98	111	102	112	42%
Graduate						
Masters & Ed. Spec.	678	714	674	797	849	25%
Doctoral	671	709	999	1,067	1,073	60%
Nondegree	25	17	20	24	26	4%
Total MU Full-time Non-Resident Graduate	1,374	1,440	1,693	1,888	1,948	42%
Total MU Full-time Non-Resident Headcount	5,016	5,514	6,414	7,164	7,998	59%

**UNIVERSITY OF MISSOURI-COLUMBIA PART-TIME NON-RESIDENT HEADCOUNT**

Undergraduate						
Freshman & Soph DS	60	80	66	114	143	138%
Junior & Senior DS	81	69	95	123	167	106%
Nondegree	68	39	39	38	40	-41%
Total MU Part-time Non-Resident Undergraduate	209	188	200	275	350	67%
First Professional						
Law (JD)	1	0	1	0	2	100%
Medicine (MD)	0	0	0	0	0	
Vet. Med (DVM)	0	0	0	0	0	
Total MU Part-time Non-Resident 1st Professional	1	0	1	0	2	100%
Graduate						
Masters & Ed. Spec.	479	517	546	488	477	0%
Doctoral	480	493	247	282	297	-38%
Nondegree	142	123	105	93	74	-48%
Total MU Part-time Non-Resident Graduate	1,101	1,133	898	863	848	-23%
Total MU Part-time Non-Resident Headcount	1,311	1,321	1,099	1,138	1,200	-8%

Undergraduate						
Freshman & Soph DS	2,325	2,738	3,203	3,531	4,066	75%
Junior & Senior DS	1,330	1,343	1,515	1,767	2,053	54%
Nondegree	117	83	92	151	169	44%
Total MU Non-Resident Undergraduate	3,772	4,164	4,810	5,449	6,288	67%
First Professional						
Law (JD)	41	31	31	18	29	-29%
Medicine (MD)	12	10	16	15	18	50%
Vet. Med (DVM)	27	57	65	69	67	148%
Total MU Non-Resident 1st Professional	80	98	112	102	114	43%
Graduate						
Masters & Ed. Spec.	1,157	1,231	1,220	1,285	1,326	15%
Doctoral	1,151	1,202	1,246	1,349	1,370	19%
Nondegree	167	140	125	117	100	-40%
Total MU Non-Resident Graduate	2,475	2,573	2,591	2,751	2,796	13%
Grand Total MU Non-Resident Headcount	6,327	6,835	7,513	8,302	9,198	45%







**Table 4.3a Resident Headcount History by Student Level, Load, and Campus, Fall 2008 to Fall 2012**

<b>Level</b>	<b>2008</b>	<b>2009</b>	<b>2010</b>	<b>2011</b>	<b>2012</b>	<b>5 yr. Change</b>
Undergraduate						
Freshman & Soph DS	1,650	1,760	1,811	1,780	1,752	6%
Junior & Senior DS	2,012	2,114	2,178	2,313	2,401	19%
Nondegree	4	1	0	1	1	-75%
Total MO S&T Full-time Resident Undergraduate	3,666	3,875	3,989	4,094	4,154	13%
Graduate						
Masters & Ed. Spec.	118	158	207	199	153	30%
Doctoral	75	75	64	79	66	-12%
Nondegree	0	0	0	0	0	
Total MO S&T Full-time Resident Graduate	193	233	271	278	219	13%
Total Missouri S&T Full-time Resident Headcount	3,859	4,108	4,260	4,372	4,373	13%
Undergraduate						
Freshman & Soph DS	57	70	65	68	68	19%
Junior & Senior DS	229	230	299	295	356	55%
Nondegree	22					

**Table 4.3b Non-Resident Headcount History by Student Level, Load, and Campus, Fall 2008 to Fall 2012**

<b>Level</b>	<b>2008</b>	<b>2009</b>	<b>2010</b>	<b>2011</b>	<b>2012</b>	<b>5 yr. Change</b>
Undergraduate Freshman & Soph DS	459	463	465	458	506	10%



**Table 4.4b Non-Resident Headcount History by Student Level, Load, and Campus, Fall 2008 to Fall 2012**

<b>Level</b>	<b>2008</b>	<b>2009</b>	<b>2010</b>	<b>2011</b>	<b>2012</b>	<b>5 yr. Change</b>
Undergraduate						
Freshman & Soph DS	267	286	274	306	335	25%
Junior & Senior DS	353	383	396	391	388	10%
Nondegree	57	42	40	39	36	-37%
Total UMSL Full-time Non-Resident Undergraduate	677	711	710	736	759	12%
First Professional						
Optometry (OD)	89	93	97	107	108	21%
Total UMSL Full-time Non-Resident 1st Professional	89	93	97	107	108	21%
Graduate						
Masters & Ed. Spec.	164	167	165	143	170	4%
Doctoral	73	68	146	137	117	60%
Nondegree	9	8	12	6	5	-44%
Total UMSL Full-time Non-Resident Graduate	246	243	323	286	292	19%
<b>Total UMSL Full-time Non-Resident Headcount</b>	<b>1,012</b>	<b>1,047</b>	<b>1,130</b>	<b>1,129</b>	<b>1,159</b>	<b>15%</b>
Undergraduate						
Freshman & Soph DS	28	19	26	27	30	7%
Junior & Senior DS	158	157	141	139	159	1%
Nondegree	33	33	29	37	28	-15%
Total UMSL Part-time Non-Resident Undergraduate	219	209	196	203	217	-1%
First Professional						
Optometry (OD)	0	0	0	0	0	-
Total UMSL Part-time Non-Resident 1st Professional	0	0	0	0	0	-
Graduate						
Masters & Ed. Spec.	215	171	207	399	387	80%
Doctoral	96	105	29	34	41	-57%
Nondegree	51	15	45			



**Table 5. Headcount Students by Gender and Ethnicity (continued)**

<b>Data - Classification</b>	<b>HC</b>	<b>%</b>	<b>HC</b>	<b>%</b>	<b>HC</b>	<b>%</b>	<b>HC</b>	<b>%</b>	<b>HC</b>	<b>%</b>
<b>B. Ethnicity *</b>										
Am Indian/Alaskan Native										
First-time DS Freshmen	14	0%	2	0%	1	0%				