

**ENROLLMENT SUMMARY REPORT  
FALL 2010**

Dr. La Shonda Carter-Boone  
Senior Institutional Research Analyst

Office of Institutional Research & Planning  
714 Lewis Hall  
University of Missouri System

December 2010

IR&P 2010, Report 3

<http://www.umsystem.edu/ums/departments/fa/planning/>

## FALL 2010 ENROLLMENT SUMMARY

### Executive Summary

This report summarizes the status and trends in fall enrollment at the University of Missouri's four campuses. The report includes information about enrollment, full-time equivalence, new students on campus, undergraduate transfer students, full/part-time status, gender and ethnicity information.

Please note that enrollment totals in this report follow federal and state guidelines, which recommend that students who are classified as "exclusive auditors" are not included in enrollment figures. Consequently, students who are classified as "exclusive auditors" are not included in the campus totals. (Exclusive auditors are defined as students who are enrolled exclusively in courses that are not taken for credit.)

### Highlights of the report include:

The University of Missouri System enrolled a record 71,596 students in Fall 2010, 2,212 more students than the record 69,384 students that enrolled in Fall 2009. Total enrollment at the University has increased by 27% over the past 10 years (Table 1).

In Fall 2010, the University of Missouri System enrolled 53,358 undergraduate students (75% of total headcount), 3,006 first professional students (4%), and 15,232 graduate students (21%) (Table 1).

Over the past 10 years, undergraduate headcount has increased by 25%, first-professional headcount by 11% and graduate headcount by 38% (Table 1).

Since 2006, total student credit hours and total full-time equivalence have both increased by 14% (Table 2.0).

Over the past five years, total full-time resident headcount has increased 12% (Table 4.0a) and total full-time non-resident headcount has increased 33% (Table 4.0b).

Women comprised 53% of total enrollment in Fall 2010. UM-St. Louis had the largest percentage of women (61%) and MO S&T had the highest proportion of men (78%) (Table 5).

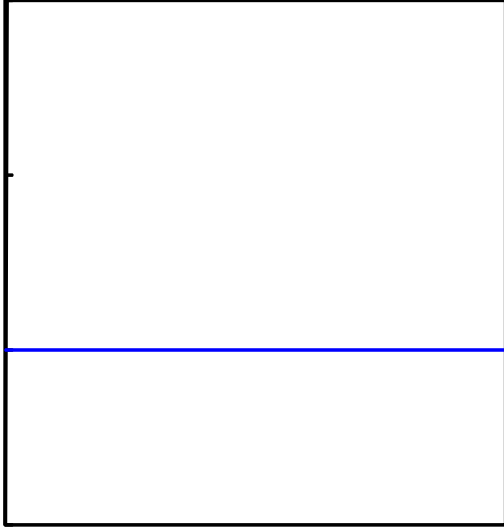
Of all the students of known ethnicity, under-represented minorities (American Indian/Alaskan Native, African-American, and Hispanic) represented 13% of the University of Missouri System's total enrollment (Table 5).

## **Technical Notes**

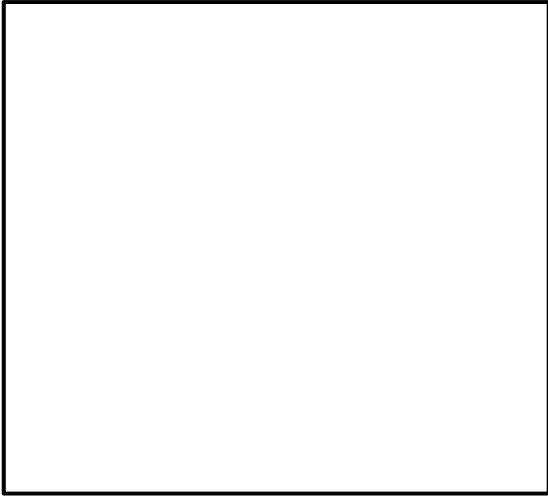
These tables provide counts of students enrolled in the fall of 2010 on-schedule credit courses at the four campuses of the University of Missouri. Five and ten-year trend data are included in the tables for comparison purposes. The data used in this report were generated from the EMSAS Fall Enrollment files, which are submitted to the Missouri Department of Higher Education (MDHE) each fall. Data included in EMSAS files were prepared in the admissions and registration offices at the respective campuses. The data are counts as of the census date at each campus, which is defined as the end of the fourth week of classes for the fall session. The source data are based on the reporting guidelines and definitions of the Missouri Department of Higher Education (MDHE) and the National Center for Educational Statistics (NCES).

**Figure 1: Rate of Change in Fall Headcount by Student Level and Campus,  
Fall 2001 to Fall 2010**

**UNIVERSITY OF MISSOURI SYSTEM**

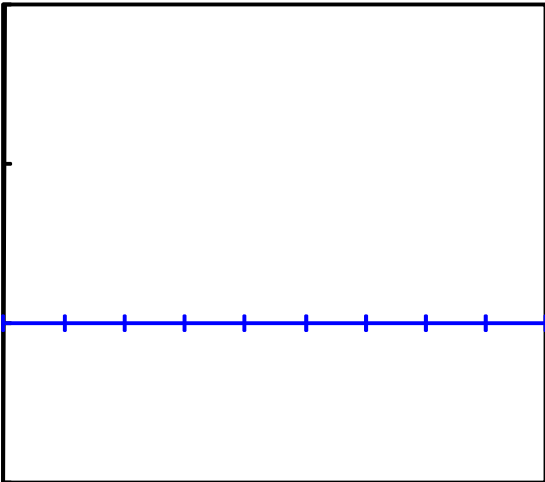


**Figure 1.1: Rate of Change in Fall Headcount by Student Level and Campus,  
Fall 2001 to Fall 2010**



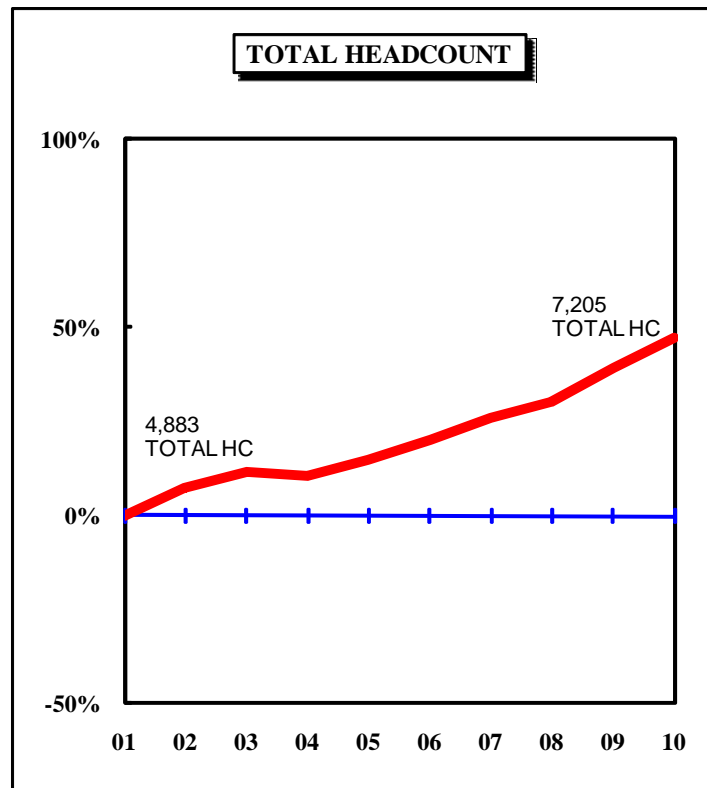
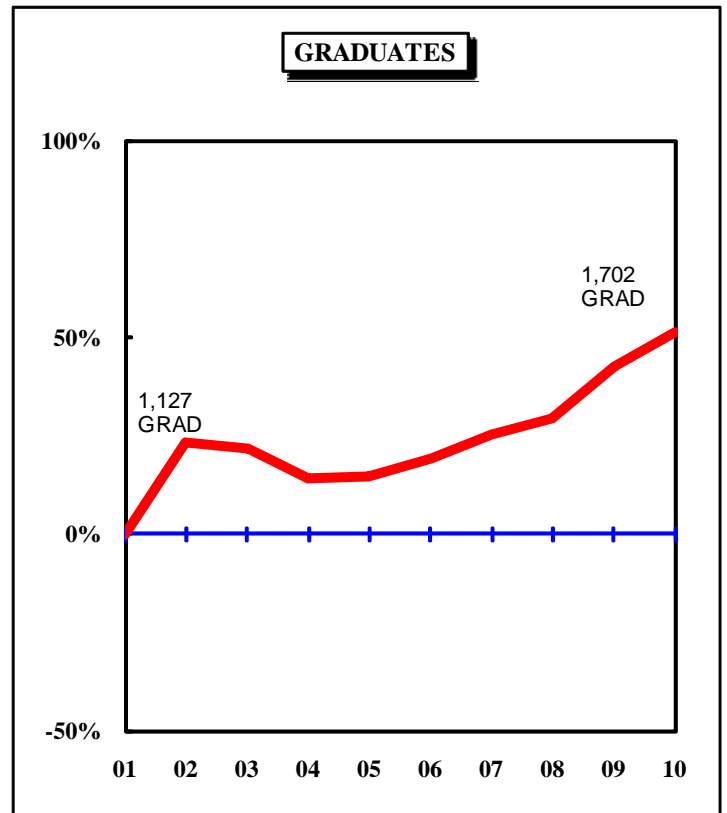
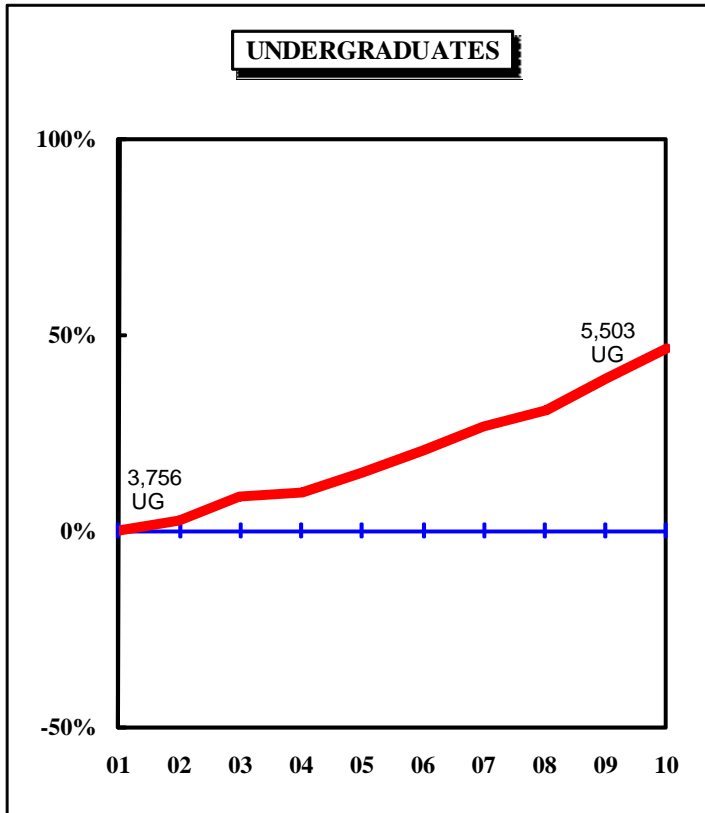
**Figure 1.2: Rate of Change in Fall Headcount by Student Level and Campus,  
Fall 2001 to Fall 2010**

**UNIVERSITY OF MISSOURI-KANSAS CITY**



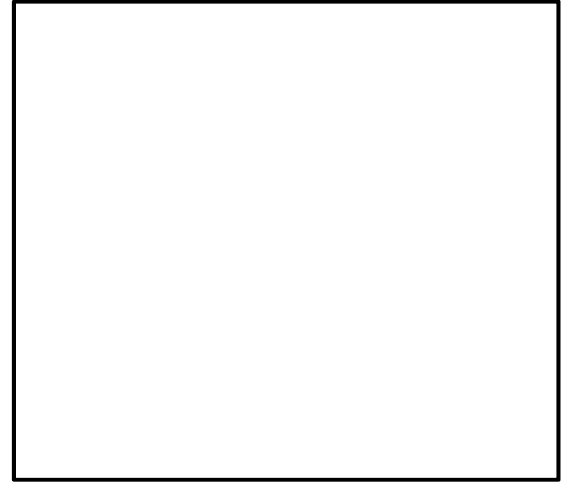
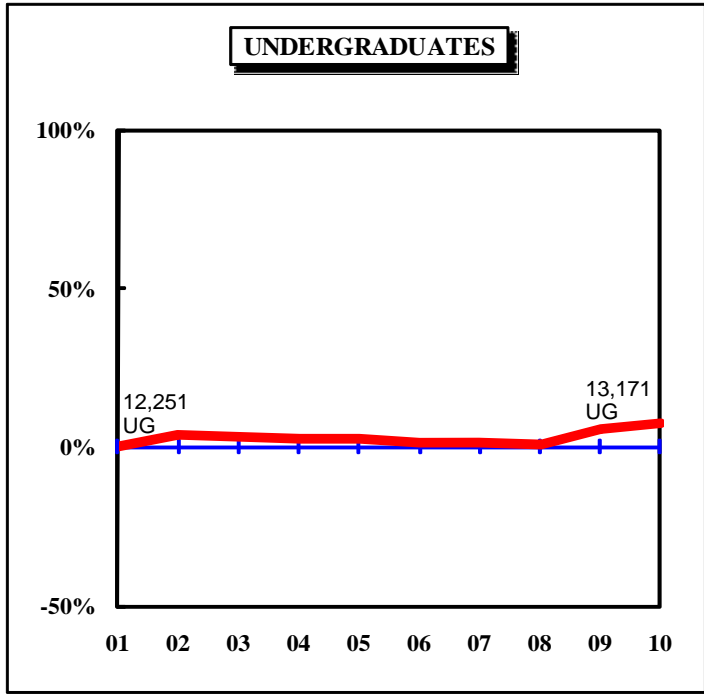
**Figure 1.3: Rate of Change in Fall Headcount by Student Level and Campus, Fall 2001 to Fall 2010**

**MISSOURI S&T**



**Figure 1.4: Rate of Change in Fall Headcount by Student Level and Campus,  
Fall 2001 to Fall 2010**

**UNIVERSITY OF MISSOURI-ST. LOUIS**

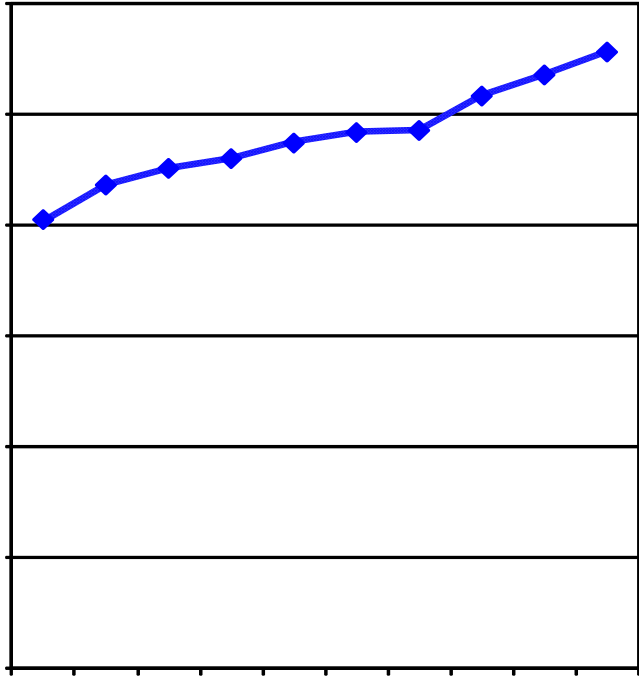




**Table 1. Headcount History by Student Level and Campus, Fall 2001 to Fall 2010**

<b>Campus</b>	<b>Level</b>	<b>2001</b>	<b>2002</b>	<b>2003</b>	<b>2004</b>	<b>2005</b>	<b>2006</b>	<b>2007</b>	<b>2008</b>	<b>2009</b>	<b>2010</b>	<b>10 yr. Change</b>
Columbia	Undergraduate	18,431	19,698	20,441	20,883	21,335	21,484	21,586	22,980	23,799	24,834	35%
	Professional	1,162	1,146	1,109	1,069	1,083	1,102	1,111	1,126	1,150	1,197	3%
	Graduate	4,074	5,280	5,255	5,051	5,512	5,598	5,708	6,024	6,288	6,310	55%
	Total	23,667	26,124	26,805	27,003	27,930	28,184	28,405	30,130	31,237	32,341	37%
Kansas City	Undergraduate	8,299	8,870	9,167	9,393	9,487	9,383	9,094	9,261	9,381	9,850	19%
	Professional	1,390	1,444	1,435	1,494	1,523	1,509	1,548	1,569	1,623	1,638	18%
	Graduate	3,280	3,567	3,624	3,369	3,296	3,321	3,800	3,651	3,795	3,771	15%
	Total*	12,969	13,881	14,226	14,256	14,306	14,213	14,442	14,481	14,799	15,259	18%
MO S&T	Undergraduate	3,756	3,849	4,089	4,119	4,311	4,515	4,752	4,911	5,206	5,503	47%
	Graduate	1,127	1,391	1,370	1,285	1,289	1,343	1,414	1,456	1,608	1,702	51%
	Total	4,883	5,240	5,459	5,404	5,600	5,858	6,166	6,367	6,814	7,205	48%
St. Louis	Undergraduate	12,251	12,715	12,624	12,572	12,606	12,459	12,432	12,358	12,966	13,171	8%
	Professional	163	158	159	165	164	173	171	178	179	171	5%
	Graduate	2,579	2,785	2,816	2,761	2,778	2,896	2,924	3,205	3,389	3,449	34%
	Total*	14,993	15,658	15,599	15,498	15,548	15,528	15,527	15,741	16,534	16,791	12%
System	Undergraduate	42,737	45,132	46,321	46,967	47,739	47,841	47,864	49,510	51,352	53,358	25%
	Professional	2,715	2,748	2,703	2,728	2,770	2,784	2,830	2,873	2,952	3,006	11%
	Graduate	11,060	13,023	13,065	12,466	12,875	13,158	13,846	14,336	15,080	15,232	38%
	Grand Total	56,512	60,903	62,089	62,161	63,384	63,783	64,540	66,719	69,384	71,596	27%

\*The total enrollment for UMKC and UMSL include students taking college credit at their high school through dual credit programs. When these students are excluded from the headcount, the total enrollment for UMKC is 13,863 and the total enrollment for UMSL is 13,095.







**Table 2.2 Headcounts, Full-time Equivalence, and Student Credit Hours by Location, Fall 2006 to Fall 2010**

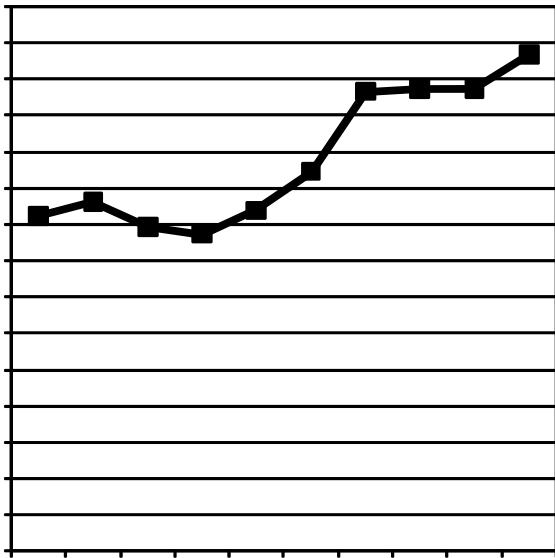
	FS06	FS07	FS08	FS09	FS10	FS06	FS07	FS08	FS09	FS10	FS06	FS07	FS08	FS09	FS10	5-yr. Change
Headcount by Student Level																
<b>Undergraduate</b>																
Fresh & Soph DS	2,880	3,029	3,017	3,126	3,241	0	13	0	0	0	2,880	3,042	3,017	3,126	3,241	13%
Junior & Senior DS	4,187	3,890	4,330	4,591	4,943	0	43	4	4	2	4,187	3,933	4,334	4,595	4,945	18%
Nondegree	<u>284</u>	<u>255</u>	<u>307</u>	<u>313</u>	<u>268</u>	<u>2,032</u>	<u>1,864</u>	<u>1,603</u>	<u>1,347</u>	<u>1,396</u>	<u>2,316</u>	<u>2,119</u>	<u>1,910</u>	<u>1,660</u>	<u>1,664</u>	-28%
Total Undergraduate	7,351	7,174	7,654	8,030	8,452	2,032	1,920	1,607	1,351	1,398	9,383	9,094	9,261	9,383	9,509	13%

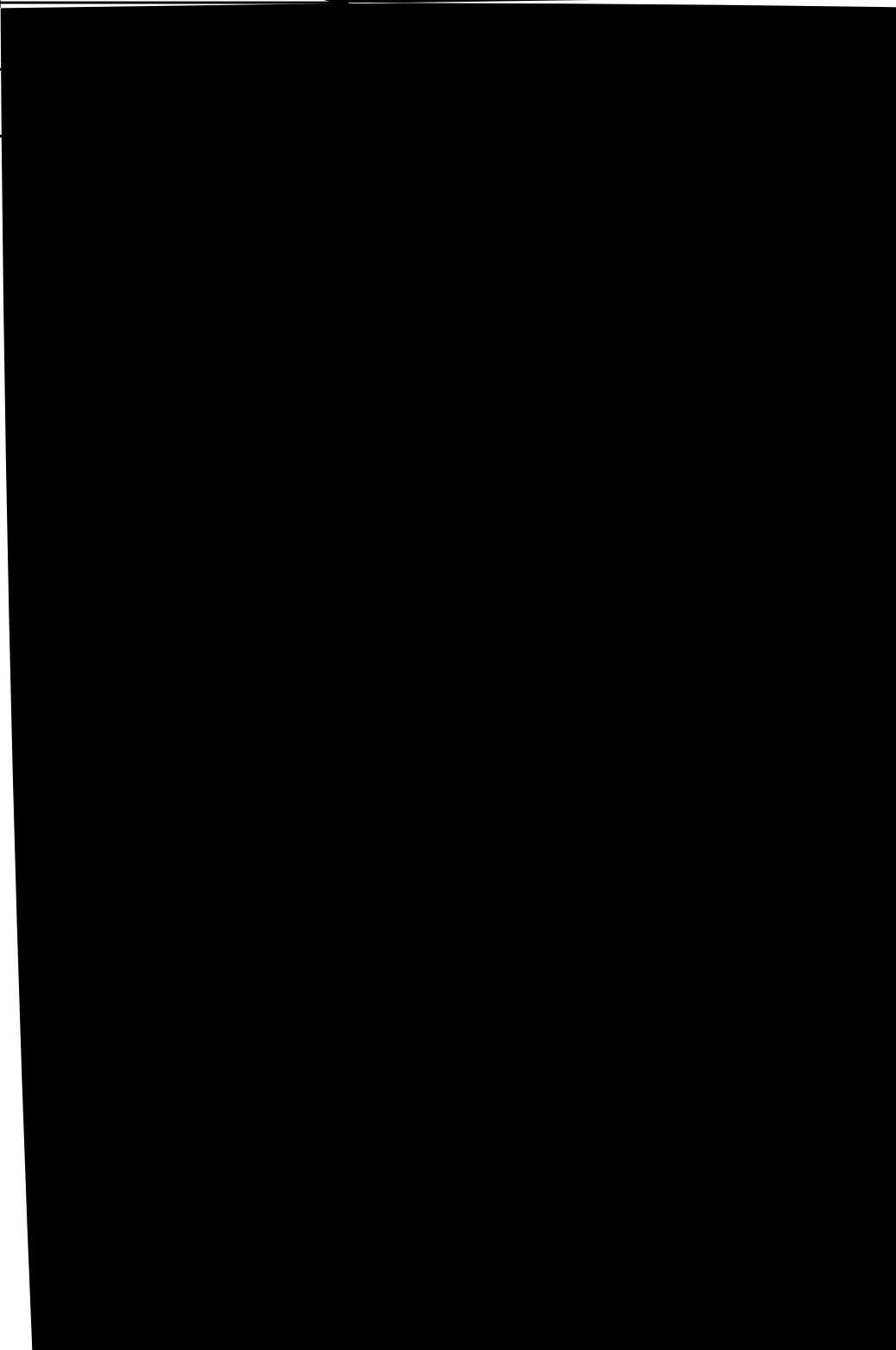
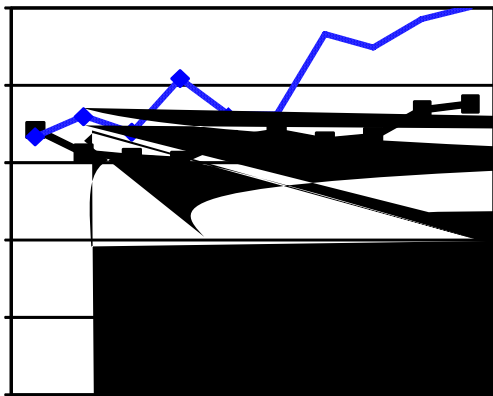
**Table 2.3 Headcounts, Full-time Equivalence, and Student Credit Hours by Location, Fall 2006 to Fall 2010**



A series of 15 horizontal lines for writing, arranged in a column. The lines are evenly spaced and extend across the width of the page. At the bottom of the page, there is a horizontal ruler with vertical tick marks.

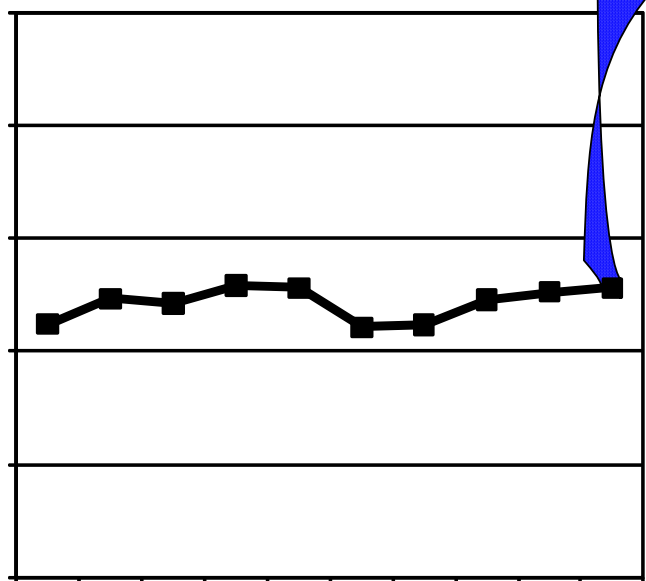






**Table 3. On-Campus New Student Headcount, Fall 2006 - Fall 2010**

	<b>2006</b>	<b>2007</b>	<b>2008</b>	<b>2009</b>	<b>2010</b>	<b>5 yr. Change</b>
<b>Freshmen</b>						
Degree-Seeking	4,836	4,980	5,780	5,589	6,087	26%



<b>Level</b>	<b>2006</b>	<b>2007</b>	<b>2008</b>	<b>2009</b>	<b>2010</b>	<b>5 yr. Change</b>
Undergraduate						
Freshman & Soph DS	13,412	13,504	14,380	14,514	14,609	9%
Junior & Senior DS	16,335	16,378	16,556	17,441	18,223	12%
Nondegree	124	138	130	126	151	22%
Total System Full-time Resident Undergraduate	29,871	30,020	31,066	32,081	32,983	10%
First Professional						
Dentistry (DDS)	252	265	276	286	298	18%
Law (JD)	778	771	776	797	755	-3%
Medicine (MD)	611	641	652	649	633	4%
Optometry (OD)	83	86	89	86	74	-11%
Pharmacy (Dpharm)	225	252	278	320	327	45%
Vet. Med (DVM)	254	255	259	264	301	19%
Total System Full-time Resident 1st Professional	2,203	2,270	2,330	2,402	2,388	8%
Graduate						
Masters & Ed. Spec.	2,084	2,051	2,036			

**Table 4.0b Non-Resident Headcount History by Student Level, Load, and Campus, Fall 2006 to Fall 2010**

<b>Level</b>	<b>2006</b>	<b>2007</b>	<b>2008</b>	<b>2009</b>	<b>2010</b>	<b>5 yr. Change</b>
Undergraduate						
Freshman & Soph DS	3,051	3,191	3,649	4,119	4,629	52%
Junior & Senior DS	2,786	2,817	2,954	3,128	3,469	25%
Nondegree	96	111	151	142	168	75%

**Table 4.1a Resident Headcount History by Student Level, Load, and Campus, Fall 2006 to Fall 2010**

<b>Level</b>	<b>2006</b>	<b>2007</b>	<b>2008</b>	<b>2009</b>	<b>2010</b>	<b>5 yr. Change</b>
<b>UNIVERSITY OF MISSOURI-COLUMBIA FULL-TIME RESIDENT HEADCOUNT</b>						
Undergraduate						
Freshman & Soph DS	8,463	8,438	9,079	9,099	9,137	8%
Junior & Senior DS	8,845	8,769	8,967	9,294	9,675	9%
Nondegree	1	9	2	2	1	0%
Total MU Full-time Resident Undergraduate	17,309	17,216	18,048	18,395	18,813	9%
First Professional						
Law (JD)	404	404	398	409	398	-1%
Medicine (MD)	364	370	375	375	372	2%
Vet. Med (DVM)	254	255	259	264	301	19%
Total MU Full-time Resident 1st Professional	1,022	1,029	1,032	1,048	1,071	5%
Graduate						
Masters & Ed. Spec.	1,112	1,074	1,054	1,191	1,157	4%
Doctoral	336	305	322	376	761	126%
Nondegree	38	28	33	29	26	-32%
Total MU Full-time Resident Graduate	1,486	1,407	1,409	1,596	1,944	31%
<b>Total MU Full-time Resident Headcount</b>	<b>19,817</b>	<b>19,652</b>	<b>20,489</b>	<b>21,039</b>	<b>21,828</b>	<b>10%</b>
<b>UNIVERSITY OF MISSOURI-COLUMBIA PART-TIME RESIDENT HEADCOUNT</b>						
Undergraduate						
Freshman & Soph DS	217	267	249	257	229	6%
Junior & Senior DS	698	746	698	797	843	21%
Nondegree	204	143	213	186	139	-32%
Total MU Part-time Resident Undergraduate	1,119	1,156	1,160	1,240	1,211	8%
First Professional						
Law (JD)	13	14	14	4	14	8%
Medicine (MD)	1	0	0	0	0	
Vet. Med (DVM)	3	0	0	0	0	
Total MU Part-time Resident 1st Professional	17	14	14	4	14	-18%
Graduate						
Masters & Ed. Spec.	808	935	1,012	1,059	1,100	36%
Doctoral	658	700	659	679	318	-52%
Nondegree	328	348	469	381	357	9%
Total MU Part-time Resident Graduate	1,794	1,983	2,140	2,119	1,775	-1%
<b>Total MU Part-time Resident Headcount</b>	<b>2,930</b>	<b>3,153</b>	<b>3,314</b>	<b>3,363</b>	<b>3,000</b>	<b>2%</b>
<b>UNIVERSITY OF MISSOURI-COLUMBIA TOTAL RESIDENT HEADCOUNT</b>						
Undergraduate						
Freshman & Soph DS	8,680	8,705	9,328	9,356	9,366	8%
Junior & Senior DS	9,543	9,515	9,665	10,091	10,518	10%
Nondegree	205	152	215	188	140	-32%
Total MU Resident Undergraduate	18,428	18,372	19,208	19,635	20,024	9%
First Professional						
Law (JD)	417	418	412	413	412	-1%
Medicine (MD)	365	370	375	375	372	2%
Vet. Med (DVM)	257	255	259	264	301	17%
Total MU Resident 1st Professional	1,039	1,043	1,046	1,052	1,085	4%
Graduate						
Masters & Ed. Spec.	1,920	2,009	2,066	2,250	2,257	18%
Doctoral	994	1,005	981	1,055	1,079	9%
Nondegree	366	376	502	410	383	5%
Total MU Resident Graduate	3,280	3,390	3,549	3,715	3,719	13%
<b>Grand Total MU Resident Headcount</b>	<b>22,747</b>	<b>22,805</b>	<b>23,803</b>	<b>24,402</b>	<b>24,828</b>	<b>9%</b>

**Table 4.1b Non-Resident Headcount History by Student Level, Load, and Campus, Fall 2006 to Fall 2010**

<b>Level</b>	<b>2006</b>	<b>2007</b>	<b>2008</b>	<b>2009</b>	<b>2010</b>	<b>5 yr. Change</b>
<b>UNIVERSITY OF MISSOURI-COLUMBIA FULL-TIME NON-RESIDENT HEADCOUNT</b>						
Undergraduate						
Freshman & Soph DS	1,790	1,864	2,265	2,658	3,137	75%
Junior & Senior DS	1,094	1,169	1,249	1,274	1,420	30%
Nondegree	32	35	49	44	53	66%
Total MU Full-time Non-Resident Undergraduate	2,916	3,068	3,563	3,976	4,610	58%
First Professional						
Law (JD)	38	38	40	31	30	-21%
Medicine (MD)	10	5	12	10	16	60%
Vet. Med (DVM)	14	23	27	57	65	364%
Total MU Full-time Non-Resident 1st Professional	62	66	79	98	111	79%
Graduate						
Masters & Ed. Spec.	646	664	678	714	674	4%
Doctoral	643	626	671	709	999	55%
Nondegree	26	21	25	17	20	-23%
Total MU Full-time Non-Resident Graduate	1,315	1,311	1,374	1,440	1,693	29%
Total MU Full-time Non-Resident Headcount	4,293	4,445	5,016	5,514	6,414	49%
<b>UNIVERSITY OF MISSOURI-COLUMBIA PART-TIME NON-RESIDENT HEADCOUNT</b>						
Undergraduate						
Freshman & Soph DS	41	54	60	80	66	61%
Junior & Senior DS	56	79	81	69	95	70%
Nondegree	43	13	68	39	39	-9%
Total MU Part-time Non-Resident Undergraduate	140	146	209	188	200	43%
First Professional						
Law (JD)	1	2	1	0	1	
Medicine (MD)	0	0	0	0	0	
Vet. Med (DVM)	0	0	0	0	0	
Total MU Part-time Non-Resident 1st Professional	1	2	1	0	1	
Graduate						
Masters & Ed. Spec.	394	433	479	517	546	39%
Doctoral	464	476	480	493	247	-47%
Nondegree	145	98	142	123	105	-28%
Total MU Part-time Non-Resident Graduate	1,003	1,007	1,101	1,133	898	-10%
Total MU Part-time Non-Resident Headcount	1,144	1,155	1,311	1,321	1,099	-4%
<b>UNIVERSITY OF MISSOURI-COLUMBIA TOTAL NON-RESIDENT HEADCOUNT</b>						
Undergraduate						
Freshman & Soph DS	1,831	1,918	2,325	2,738	3,203	75%
Junior & Senior DS	1,150	1,248	1,330	1,343	1,515	32%
Nondegree	75	48	117	83	92	23%
Total MU Non-Resident Undergraduate	3,056	3,214	3,772	4,164	4,810	57%
First Professional						
Law (JD)	39	40	41	31	31	-21%
Medicine (MD)	10	5	12	10	16	60%
Vet. Med (DVM)	14	23	27	57	65	364%
Total MU Non-Resident 1st Professional	63	68	80	98	112	78%
Graduate						
Masters & Ed. Spec.	1,040	1,097	1,157	1,231	1,220	17%
Doctoral	1,107	1,102	1,151	1,202	1,246	13%
Nondegree	171	119	167	140	125	-27%
Total MU Non-Resident Graduate	2,318	2,318	2,475	2,573	2,591	12%
Grand Total MU Non-Resident Headcount	5,437	5,600	6,327	6,835	7,513	38%



**Table 4.2a Resident Headcount History by Student Level, Load, and Campus, Fall 2006 to Fall 2010**

<b>Level</b>	<b>2006</b>	<b>2007</b>	<b>2008</b>	<b>2009</b>	<b>2010</b>	<b>5 yr. Change</b>
<b>UNIVERSITY OF MISSOURI-KANSAS CITY FULL-TIME RESIDENT HEADCOUNT</b>						
Undergraduate						
Freshman & Soph DS	1,948	1,962	1,987	2,067	2,125	9%
Junior & Senior DS	2,144	2,035	2,226	2,421	2,668	24%
Nondegree	10	27	17	6	11	10%
Total UMKC Full-time Resident Undergraduate	4,102	4,024	4,230	4,494	4,804	17%
First Professional						
Dentistry (DDS)	252	265	276	286	298	18%
Law (JD)	374	367	378	388	357	-5%
Medicine (MD)	247	271	277	274	261	6%
Pharmacy (Dpharm)	225	252	278	320	327	45%
Total UMKC Full-time Resident 1st Professional	1,098	1,155	1,209	1,268	1,243	13%
Graduate						
Masters & Ed. Spec.	479	439	435	492	534	11%
Doctoral	49	41	45	34	51	4%
Nondegree	5	3	2	18	1	-80%
Total UMKC Full-time Resident Graduate	533	483	482	544	586	10%
Total UMKC Full-time Resident Headcount	5,733	5,662	5,921	6,306	6,633	16%
<b>UNIVERSITY OF MISSOURI-KANSAS CITY PART-TIME RESIDENT HEADCOUNT</b>						
Undergraduate						
Freshman & Soph DS	236	304	278	270	269	14%
Junior & Senior DS	791	768	857	817	808	2%
Nondegree	2,142	1,997	1,759	1,499	1,483	-31%
Total UMKC Part-time Resident Undergraduate	3,169	3,069	2,894	2,586	2,560	-19%
First Professional						
Law (JD)	22	26	19	22	21	-5%
Total UMKC Part-time Resident 1st Professional	22	26	19	22	21	-5%
Graduate						
Masters & Ed. Spec.	1,019	1,090	1,073	1,110	1,124	10%
Doctoral	152	168	204	216	192	26%
Nondegree	174	497	226	221	152	-13%
Total UMKC Part-time Resident Graduate	1,345	1,755	1,503	1,547	1,468	9%
Total UMKC Part-time Resident Headcount	4,536	4,850	4,416	4,155	4,049	-11%
<b>UNIVERSITY OF MISSOURI-KANSAS CITY TOTAL RESIDENT HEADCOUNT</b>						
Undergraduate						
Freshman & Soph DS	2,184	2,266	2,265	2,337	2,394	10%
Junior & Senior DS	2,935	2,803	3,083	3,238	3,476	18%
Nondegree	2,152	2,024	1,776	1,505	1,494	-31%
Total UMKC Resident Undergraduate	7,271	7,093	7,124	7,080	7,364	1%
First Professional						
Dentistry (DDS)	252	265	276	286	298	18%
Law (JD)	396	393	397	410	378	-5%
Medicine (MD)	247	271	277	274	261	6%
Pharmacy (Dpharm)	225	252	278	320	327	45%
Total UMKC Resident 1st Professional	1,120	1,181	1,228	1,290	1,264	13%
Graduate						
Masters & Ed. Spec.	1,498	1,529	1,508	1,602	1,658	11%
Doctoral	201	209	249	250	243	21%
Nondegree	179	500	228	239	153	-15%
Total UMKC Resident Graduate	1,878	2,238	1,985	2,091	2,054	9%
Grand Total UMKC Resident Headcount	10,269	10,512	10,337	10,461	10,682	4%



**Table 4.3a Resident Headcount History by Student Level, Load, and Campus, Fall 2006 to Fall 2010**

<b>Level</b>	<b>2006</b>	<b>2007</b>	<b>2008</b>	<b>2009</b>	<b>2010</b>	<b>5 yr. Change</b>
Undergraduate						
Freshman & Soph DS	1,497	1,607	1,650	1,760	1,811	21%
Junior & Senior DS	1,825	1,923	2,012	2,114	2,178	19%
Nondegree	6	1	4	1	0	-100%
Total MO S&T Full-time Resident Undergraduate	3,328	3,531	3,666	3,875	3,989	20%
Graduate						
Masters & Ed. Spec.	132	137	118	158	207	57%
Doctoral	66	84	75	75	64	-3%
Nondegree	1	0	0	0	0	
Total MO S&T Full-time Resident Graduate	199	221	193	233	271	36%
Total Missouri S&T Full-time Resident Headcount	3,527	3,752	3,859	4,108	4,260	21%
Undergraduate						
Freshman & Soph DS	52	62	57	70	65	25%
Junior & Senior DS	244	223	229	230	299	23%
Nondegree	41	38	22	38	34	-17%

**Table 4.3b Non-Resident Headcount History by Student Level, Load, and Campus, Fall 2006 to Fall 2010**

<b>Level</b>	<b>2006</b>	<b>2007</b>	<b>2008</b>	<b>2009</b>	<b>2010</b>	<b>5 yr. Change</b>
Undergraduate						
Freshman & Soph DS	406	446	459	463	465	15%
Junior & Senior DS	364	397	419	459	536	47%
Nondegree	0	1	4	10	5	
Total MO S&T Full-time Non-Resident Undergraduate	770	844	882	932	1,006	31%
Graduate						
Masters & Ed. Spec. ocaster	336	362	352	438	411	22%

**Table 4.4a Resident Headcount History by Student Level, Load, and Campus, Fall 2006 to Fall 2010**

<b>Level</b>	<b>2006</b>	<b>2007</b>	<b>2008</b>	<b>2009</b>	<b>2010</b>	<b>5 yr. Change</b>
<b>UNIVERSITY OF MISSOURI-ST. LOUIS FULL-TIME RESIDENT HEADCOUNT</b>						
Undergraduate						
Freshman & Soph DS	1,504	1,497	1,664	1,588	1,536	2%
Junior & Senior DS	3,521	3,651	3,351	3,612	3,702	5%
Nondegree	107	101	107	117	139	30%
Total UMSL Full-time Resident Undergraduate	5,132	5,249	5,122	5,317	5,377	5%
First Professional						
Optometry (OD)	83	86	89	86	74	-11%
Total UMSL Full-time Resident 1st Professional	83	86	89	86	74	-11%
Graduate						
Masters & Ed. Spec.	361	401	429	470	479	33%
Doctoral	65	59	59	59	120	85%
Nondegree	4	16	16	21	30	650%
Total UMSL Full-time Resident Graduate	430	476	504	550	629	46%
Total UMSL Full-time Resident Headcount	5,645	5,811	5,715	5,953	6,080	8%
<b>UNIVERSITY OF MISSOURI-ST. LOUIS PART-TIME RESIDENT HEADCOUNT</b>						
Undergraduate						
Freshman & Soph DS	437	379	499	462	429	-2%
Junior & Senior DS	2,593	2,570	2,358	2,422	2,568	-1%
Nondegree	3,397	3,305	3,483	3,845	3,891	15%
Total UMSL Part-time Resident Undergraduate	6,427	6,254	6,340	6,729	6,888	7%
First Professional						
Optometry (OD)	0	0	0	0	0	
Total UMSL Part-time Resident 1st Professional	0	0	0	0	0	
Graduate						
Masters & Ed. Spec.	1,578	1,522	1,607	1,773	1,766	12%
Doctoral	260	282	291	321	278	7%
Nondegree	93	93	195	211	172	85%
Total UMSL Part-time Resident Graduate	1,931	1,897	2,093	2,305	2,216	15%
Total UMSL Part-time Resident Headcount	8,358	8,151	8,433	9,034	9,104	9%
<b>UNIVERSITY OF MISSOURI-ST. LOUIS TOTAL RESIDENT HEADCOUNT</b>						
Undergraduate						
Freshman & Soph DS	1,941	1,876	2,163	2,050	1,965	1%
Junior & Senior DS	6,114	6,221	5,709	6,034	6,270	3%
Nondegree	3,504	3,406	3,590	3,962	4,030	15%
Total UMSL Resident Undergraduate	11,559	11,503	11,462	12,046	12,265	6%
First Professional						
Optometry (OD)	83	86	89	86	74	-11%
Total UMSL Resident 1st Professional	83	86	89	86	74	-11%
Graduate						
Masters & Ed. Spec.	1,939	1,923	2,036	2,243	2,245	16%
Doctoral	325	341	350	380	398	22%
Nondegree	97	109	211	232	202	108%
Total UMSL Resident Graduate	2,361	2,373	2,597	2,855	2,845	20%
Grand Total UMSL Resident Headcount	14,003	13,962	14,148	14,987	15,184	8%



**Table 5. Headcount Students by Gender and Ethnicity, Fall 2010**

<b>Data - Classification</b>	<b>HC</b>	<b>%</b>	<b>HC</b>	<b>%</b>	<b>HC</b>	<b>%</b>	<b>HC</b>	<b>%</b>	<b>HC</b>	<b>%</b>
<b>A. Gender</b>										
Men										
First-time DS Freshmen	2,874	47%	450	39%	895	78%	204	41%	4,423	50%
Other Undergraduate	9,061	48%	3,645	42%	3,353	77%	5,159	41%	21,218	48%
First Professional	560	47%	844	52%	0	-	70	41%	1,474	49%
Graduate	<u>2,622</u>	42%	<u>1,608</u>	43%	<u>1,348</u>	79%	<u>1,152</u>	33%	<u>6,730</u>	44%
Total	15,117	47%	6,547	43%	5,596	78%	6,585	39%	33,845	47%
Women										
First-time DS Freshmen	3,215	53%	695	61%	254	22%	293	59%	4,457	50%
Other Undergraduate	9,684	52%	5,060	58%	1,001	23%	7,515	59%	23,260	52%
First Professional	637	53%	788	48%	0	-	101	59%	1,526	51%
Graduate	<u>3,688</u>	58%	<u>2,169</u>	57%	<u>354</u>	21%	<u>2,297</u>	67%	<u>8,508</u>	56%
Total	17,224	53%	8,712	57%	1,609	22%	10,206	61%	37,751	53%

**Table 5. Headcount Students by Gender and Ethnicity (continued)**

<b>Data - Classification</b>	<b>HC</b>	<b>%</b>	<b>HC</b>	<b>%</b>	<b>HC</b>	<b>%</b>	<b>HC</b>	<b>%</b>	<b>HC</b>	<b>%</b>
<b>B. Ethnicity *</b>										
Am Indian/Alaskan Native										
First-time DS Freshmen	17	0%	5	0%	5	0%	1	0%	28	0%
Other Undergraduate	93	1%	54	1%	26	1%	34	0%	207	0%
First Professional	10	1%	5	0%	0	-	1	1%	16	1%
Graduate	<u>22</u>	0%	<u>12</u>	0%	<u>5</u>	0%	<u>16</u>	1%	55	