

**University of Missouri System  
Undergraduate Financial Aid Summary Report  
FY2000-FY2004**

(Non-Resident Undergraduate Students)

Report Prepared by  
Dr. La Shonda Carter-Boone  
Senior Institutional Research Analyst

Office of Institutional Research and Planning  
722 Lewis Hall  
University of Missouri System

August 2005

P&B 2005, Report 4

[Boonel@umsystem.edu](mailto:Boonel@umsystem.edu)  
573-884-3104

**University of Missouri System  
Undergraduate Financial Aid Summary Report  
FY2000-FY2004  
(Non-Resident Undergraduate Students)**

**Executive Summary**

The *Undergraduate Financial Aid Summary Report* includes undergraduate financial aid distribution patterns for the University of Missouri System and the four campuses from fiscal year 1999-00 (FY00) through fiscal year 2003-04 (FY04). In the first part of this report eight questions are addressed at the UM System level:

1. How many students received aid and what type of aid was received?
2. Has grant aid kept pace with increases in educational and required fees?
3. How has the distribution of institutional gift aid changed over the past five years?
4. What percent of educational and required fees is met by grant aid?
5. How has the number of aid recipients with need changed by income level?
6. How do financial aid packages vary by income level?
7. For students that have need, what is the average amount of unmet financial need?
8. Can families afford to pay the expected family contribution?

The second part of the report provides campus-level financial aid distribution patterns for the past five years, which may differ from system-level findings.

Special thanks to the campus financial aid directors who provided valuable assistance and feedback for this report: Joe Camille at UM-Columbia, Jeanette Brandow at UM-Kansas City, Bob Whites at UM-Rolla, and Tony Georges at UM-St. Louis.

**System-wide trends highlighted include:**

- Total aid to students with need is awarded from a combination of aid based on merit and aid based solely on need. As the total number of students with need increases, the amount of aid based on merit decreases.

d < i0

- In FY04, grant aid as a percent of tuition and required fees decreased for all income categories compared to FY00 (Table 1.2).
- Overall, the University continues to experience an increase in the number of students with income greater than \$80,000 who have financial need (Figure 1.3).
- Students with incomes less than \$40,000 have the highest amount of financial need and receive larger total financial aid awards than higher income students. However, lower income students continue to have the largest amount of unmet financial need (Figure 1.4).
- Over the past five years, the unmet financial need of lower income students has increased. However, a large amount of financial need continues to be met through both grant and non-grant sources of aid (Figure 1.5).
- Higher income students borrow a significant amount of the money that the family is expected to pay out-of-pocket (Table 1.3).

**Campus-specific variations from System trends:**

- In the past five years the Columbia, Kansas City, and St. Louis campuses have all experienced increases in the number of students that have need, with the largest increase at the Kansas City campus. At Rolla, there has been a 15% decrease in the enrollment of non-resident undergraduates, and thus decreases in both students with and without need (Figures 2.1, 3.1, 4.1 and 5.1).
- On the Columbia campus, students with need receive larger institutional grant awards than students that do not have financial need (Table 2.1).
- In FY04 at UMSL, grant aid covered a larger percent of the educational and required fees of students with income less than \$20,000 compared to students that had the same income level at the other three campuses (Tables 2.2, 3.2, 4.2 and 5.2)
- Higher-income students with need on the St. Louis campus are more likely than higher-income students at the other three campuses to have an unmet need.

**Undergraduate resident vs. non-resident trends:**

- Average grant aid to non-resident undergraduates has decreased nearly 12% over the past five years. In FY04 grant aid to non-resident undergraduates was nearly double the average grant awarded to residents (\$6,427 vs. \$3,495).
- In general, non-resident undergraduates receive institutional grant awards more than double the amount awarded to resident undergraduates. In FY04, non-resident undergraduates without financial need received the largest average

institutional grant award, \$5,482. During that same year, resident undergraduates with financial need received an average institutional gift award of \$1,319.

## The contextual basis of financial aid distribution

Very few undergraduates attending the University of Missouri pay the entire cost of attendance out-of-pocket. The majority of students receive some type of financial assistance to attend the University in the form of grants, scholarships, work study or loans. In addition, financial assistance comes from a wide variety of sources including the state and federal governments, profit and non-profit organizations, and the University (institutional gift aid). Finally, a significantly large amount of the financial aid that is distributed is based on financial need, i.e. it is documented that the student's family cannot afford the entire cost of attendance. A student must complete a Free Application for Federal Student Aid (FASFA) in order to determine the extent of financial need and the type and amount of need-based aid that can be awarded.

Many of the tables and figures throughout this report reference terms such as budgeted cost of attendance, financial need, grant aid, and unmet need. Assuming that a student has completed a FASFA, Figure A.1 is provided to give an overview of how a student's financial aid package is determined.

**Figure A.1**  
**Example of How Financial Need is Determined and Aid is Distributed**

\$14,000	Budgeted Cost of Attendance	{ includes educational & required fees, books, and living expenses
(4,000)	Less: Expected Family Contribution	
10,000	Financial Need	
(3,500)	Less: Grant Aid	{ includes need and non-need based grant aid from federal, state, institutional, and other sources
6,500	Remaining Need	
(1,000)	Less: College Work Study	
(4,000)	Less: Need-Based Loans	
(500)	Less: Alternative Loans	
\$1,000	Unmet Need	

Foremost, a BUDGETED COST OF ATTENDANCE (COA) is determined for every student that completes a FASFA. The COA varies by student and is based on factors such as residency status, load status (full or part-time), and living arrangements (on or off-campus). Next, the amount that the family is expected to contribute to cover the COA is determined based on several factors including the family's adjusted gross income. A student's financial need is determined by subtracting the EXPECTED FAMILY CONTRIBUTION from the budgeted COA. If the calculated value of FINANCIAL NEED is positive, the student is eligible to receive need-based assistance such as pell grants, college work study and need based loans. A student's REMAINING NEED is determined after subtracting GRANT AID (aid that does not have to be repaid) from the FINANCIAL NEED. After subtracting the remaining sources of financial aid (i.e. work study, need-based loans, and alternative loans), an UNMET NEED value is determined, which is the remaining amount of money a student needs to meet the COA after all financial assistance has been provided.

### **Caveats**

Although Figure A.1 provides a good example of how financial aid packages are determined for students, a few caveats are worth mentioning:

1. The unmet need value is based on all of the financial aid that a student ACCEPTED which does not always equal the amount of aid a student was OFFERED. For example, a student might decline a need-based loan or alternative loan which would have covered the student's remaining cost of attendance. That student would have an unmet financial need even though ample aid was offered to meet the budgeted COA.
2. A student's financial need might change during the academic year based on changes to the student's budgeted COA. For example, a student might live on-campus the first semester and decide to live off-campus the next semester.
3. Many students take part-time jobs to meet the COA. However, the compensation received from part-time jobs (other than college work study) is not documented and does not count towards meeting the COA. In essence, many students work to meet the COA and for these students the true unmet need is unknown.
4. Many families borrow the "expected family contribution" and the amount borrowed is not factored into the total financial aid package, i.e. it is not counted as financial aid. Therefore, in many cases, the true financial need of a student is underestimated.

## **Section I**

### **System-wide Financial Aid Trends of Full-Time, Degree-Seeking Non-Resident Undergraduates from FY00 to FY04**

**PLEASE NOTE:** The findings below highlight system-wide trends at the University of Missouri. Financial aid trends may differ by campus and are included in the second part of this report.

#### **1. How many students received aid and what type of aid did they receive?**

The total number of full-time, degree-seeking non-resident undergraduates steadily increased over the past five years from 4,373 to 5,379. With this increase in enrollment, there has been a 17.9% increase in the number of students that have financial need. In FY00 there were 1,741 students that had financial need. By FY04 that number grew to 2,053 students that had financial need (Figure 1.1).

#### **2. How has the allocation of grant aid kept pace with the steady increase in educational and required fees and overall total cost of attendance?**

Over the past five years educational and required fees increased 28.9% and the budgeted cost of attendance increased 0 Tr,% while

students regardless of income but students in lower incomes are impacted the most (Table 1.2).

**5. How has the number of aid recipients with need changed by income level?**



	FY00	FY01	FY02	FY03	FY04	5-yr # Change	5-yr % Change
Completed FAFSA, did not have a need	408	452	511	523	556	148	36.3%
Grant aid, no FAFSA	<u>1,223</u>	<u>1,262</u>	<u>1,239</u>	<u>1,169</u>	<u>1,144</u>	<u>-79</u>	-6.5%

FY00	FY01	FY02	FY03	FY04	5-yr # Change	5-yr % Change
------	------	------	------	------	------------------	------------------

**Table 1.1**

**Average Institutional Grant Aid Distributed to Non-Resident, Full-time, Degree-Seeking Undergraduates by Financial Need at the University of Missouri System, FY00 - FY04**

	FY00		FY01		FY02		FY03		FY04	
	N	Mean	N	Mean	N	Mean	N	Mean	N	Mean
With Need	1,741	\$4,660	1,646	\$5,749	1,618	\$5,134	1,827	\$4,650	2,053	\$4,114
Without Need	1,631	5,813	1,714	5,878	1,750	5,866	1,692	5,663	1,700	5,482

Source: UIDS  
IR&P/LCB 3/05

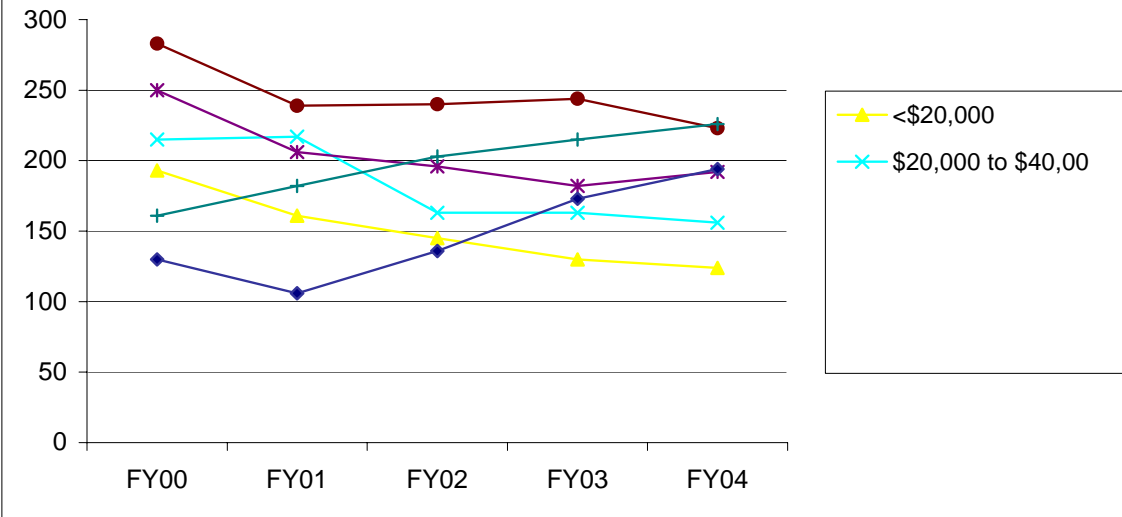
**Table 1.2**

**Total Grant Aid as % of Educational and Required Fees by Income Level at the University of Missouri System, FY00 & FY04**

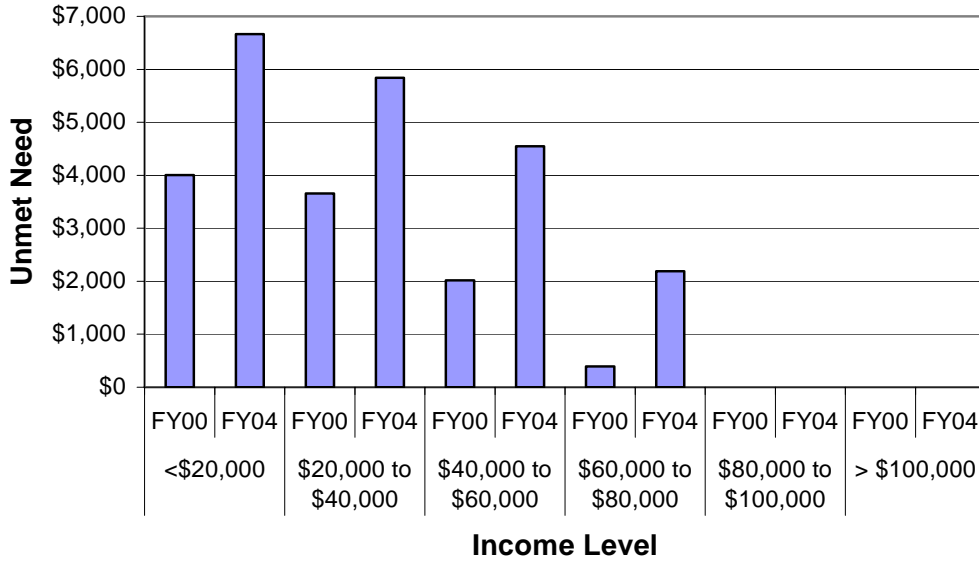
Income Level	FY00		FY04	
	% Educational & Required		% Educational & Required	
	Grant Aid	Fees	Grant Aid	Fees
<\$20,000	\$9,449	75%	\$11,187	69%
\$20,000 to \$40,00	\$9,129	73%	\$11,599	72%
\$40,000 to \$60,000	\$7,753	62%	\$9,462	58%
\$60,000 to \$80,000	\$7,539	60%	\$8,309	51%
\$80,000 to \$100,000	\$6,742	54%	\$7,681	47%
>\$100,000	\$6,725	54%	\$7,129	44%

Source: UIDS  
IR&P/LCB 3/05

**Figure 1.3**  
**Number of Full-time, Degree-Seeking 9-Month Undergraduate**  
**Non-Residents with Financial Need by Income Level at the**  
**University of Missouri System, FY00 - FY04**



**Figure 1.5**  
**Average Amount of Unmet Financial Need by Income Level**  
**at the University of Missouri System, FY00 vs. FY04**



Source: UIDS  
 IR&P/LCB 3/05

**Table 1.3**

	FY00	FY01	FY02	FY03	FY04	FY00	FY01	FY02	FY03	FY04	# Change FY00-FY04	# Change FY00-FY04
<b>Total Enrolled for 9 months (N)</b>	193	161	145	130	124						-69	-36%
Cost of Attendance	\$20,202	\$20,779	\$21,907	\$23,698	\$24,723						\$4,521	22%
Less Expected Family Contribution*	<u>1,175</u>	<u>1,105</u>	965									

**Table 1.3 (Continued)**

	FY00	FY01	FY02	FY03	FY04	FY00	FY01	FY02	FY03	FY04	# Change FY00-FY04	# Change FY00-FY04
<b>Total Enrolled for 9 months (N)</b>	283	239	240	244	223						-60	-21%
Cost of Attendance	\$20,234	\$21,074	\$21,546	\$22,870	\$24,270						\$4,037	20%
Less Expected Family Contribution*	9,792	10,059	10,212									

Grant Sources to M

	FY00	FY01	FY02	FY03	FY04	FY00	FY01	FY02	FY03	FY04	# Change	# Change
Cost of Attendance	\$19,914	\$20,626	\$21,644	\$23,017	\$24,434						\$4,520	23%
Less Expected Family Contribution*	<u>12,728</u>					64%	65%	65%	61%	62%	2,302	18%
Less Grant Aid	6,742	7,160	7,782	7,339	7,681	34%	35%	36%	32%	31%	939	14%
Unmet Need	\$444	\$25	-\$245	\$1,540	\$1,722	2%	0%	-1%	7%	7%	1,279	288%
<b>% Grant Aid that Met Financial Need</b>	<b>94%</b>	<b>100%</b>	<b>103%</b>	<b>83%</b>	<b>82%</b>							
<b>N Grant Sources to Meet Remaining Unmet Financial Need</b>												
College Work Study	\$84	\$98	\$120	\$72	\$115	0%	0%	1%	0%	0%	31	37%
Need-based Loans	1,534	1,400	1,336	1,852	1,804	8%	7%	6%	8%	7%	270	18%

## **Section II**

### **Campus-Level Financial Aid Trends of Full-Time, Degree-Seeking Non-Missouri Resident Undergraduates from FY00 to FY04**

**UM-Columbia (Table and Figure 2 series)**

**UM-Kansas City (Table and Figure 3 series)**

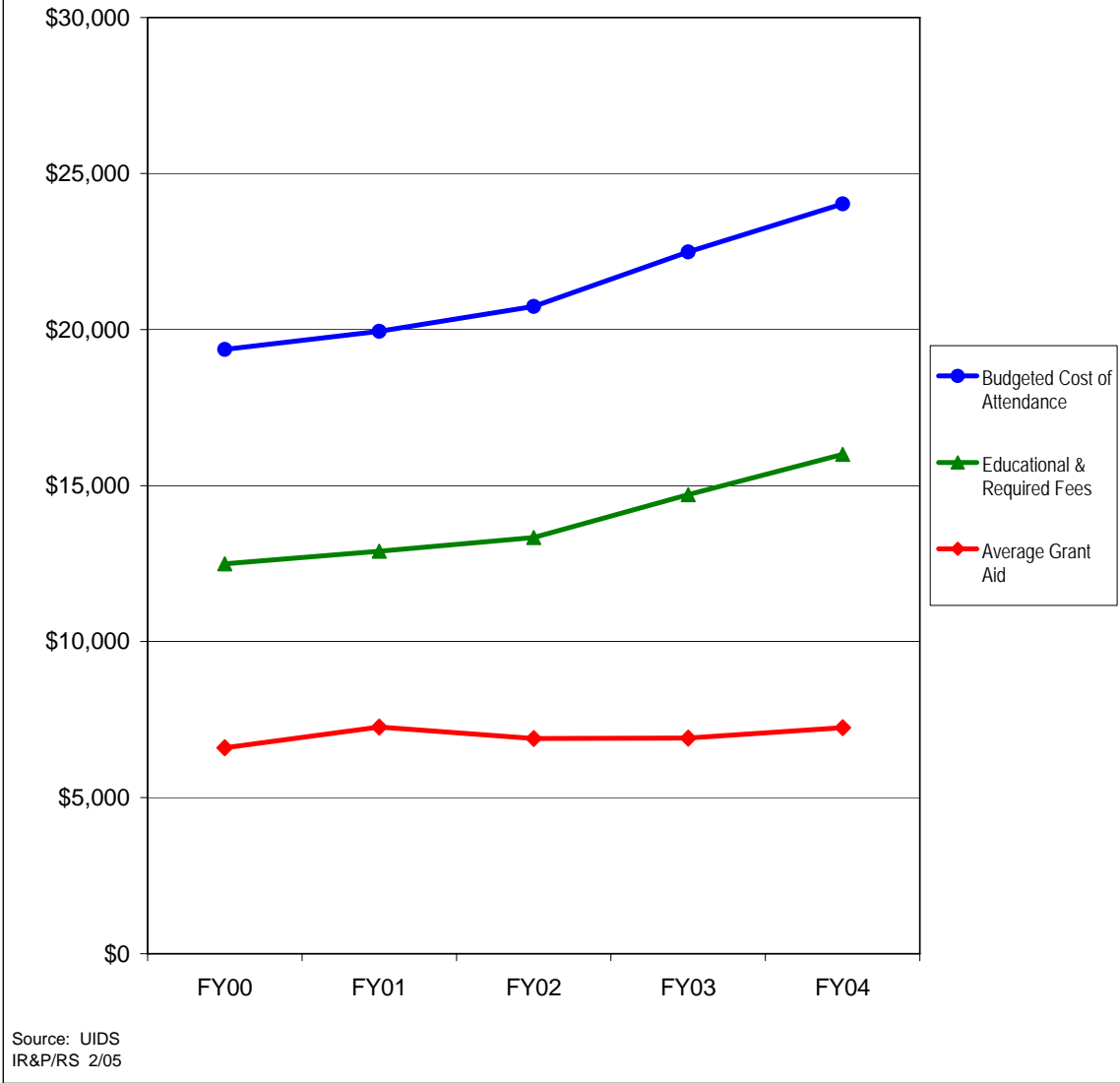
**UM-Rolla (Table and Figure 4 series)**

**UM-St. Louis (Table and Figure 5 series)**



	FY00	FY01	FY02	FY03	FY04	5-yr # Change	5-yr % Change
Completed FAFSA, did not have a need	265	297	358	338	349	84	31.7%
Grant aid, no FAFSA	<u>737</u>	<u>776</u>	<u>756</u>	<u>737</u>	<u>734</u>	<u>-3</u>	-0.4%

**Figure 2.2: Educational and Required Fees vs. 9-Month Cost of Attendance and Grant Aid for Full-time Undergraduate Non-Residents at the University of Missouri-Columbia, FY00 - FY04**

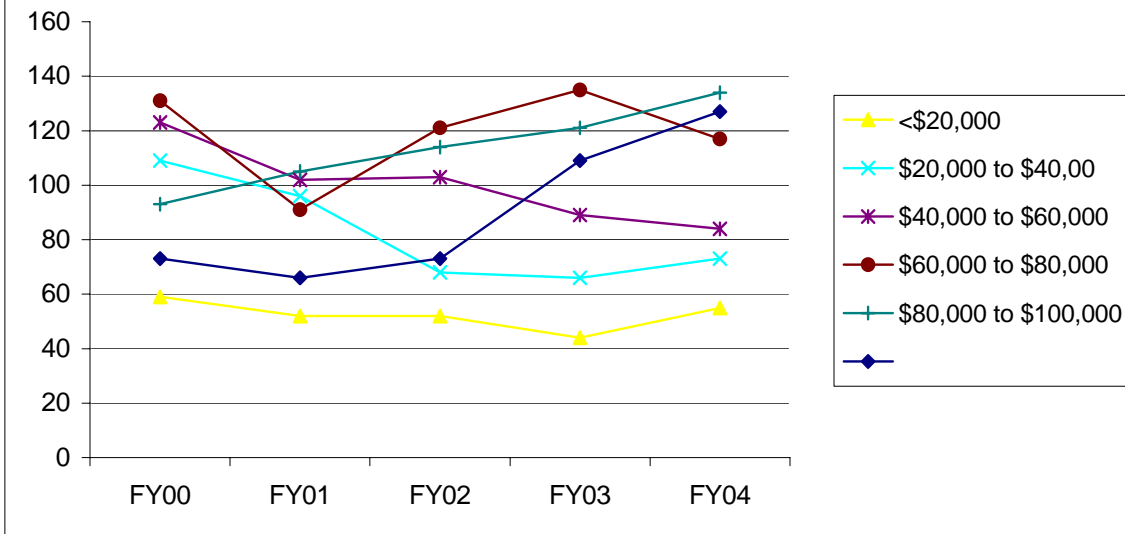


	FY00	FY01	FY02	FY03	FY04	5-yr # Change	5-yr % Change
Budgeted Cost of Attendance	\$19,361	\$19,947	\$20,738	\$22,489	\$24,024	\$4,663	24.1%
Educational & Required Fees	\$12,495	\$12,895	\$13,332	\$14,705	\$16,005	\$3,510	28.1%
Average Grant Aid	\$6,596	\$7,260	\$6,895	\$6,906	\$7,239	\$643	9.7%

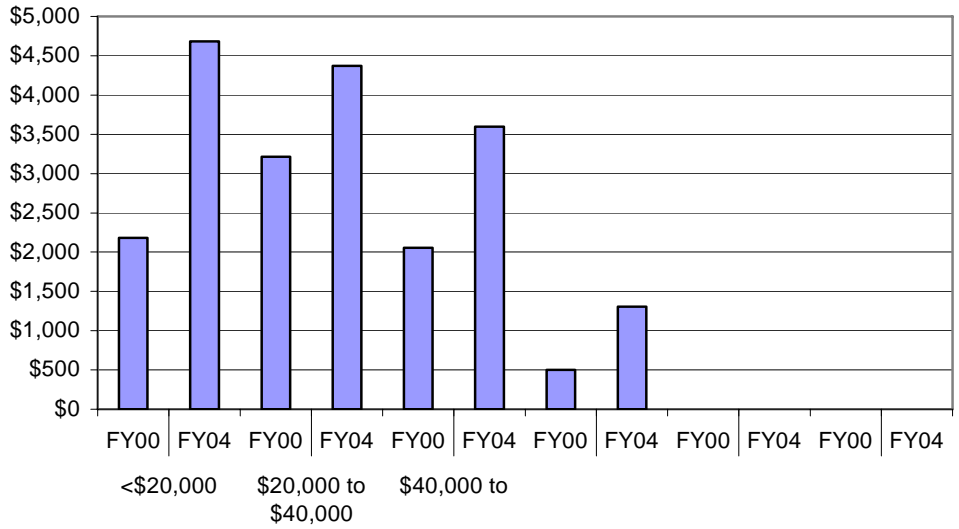
**Table 2.1**

	<b>N</b>	<b>FY00 Mean</b>	<b>N</b>	<b>FY01 Mean</b>	<b>N</b>	<b>FY02 Mean</b>	<b>N</b>	<b>FY03 Mean</b>	<b>N</b>	<b>FY04 Mean</b>
With Need	808	\$5,858	769	\$6,487	759	\$6,083	837	\$6,112	870	\$6,277
Without Need	1,002	5,601	1,073	5,715	1,114	5,929	1,07			

**Figure 2.3**  
**Number of Full-time, Degree-Seeking 9-Month Undergraduate**  
**Non-Residents with Financial Need by Income Level at the**  
**University of Missouri-Columbia, FY00 - FY04**



**Figure 2.5**  
**Average Amount of Unmet Financial Need by Income Level at**  
**the UM-Columbia, FY00 vs. FY04**



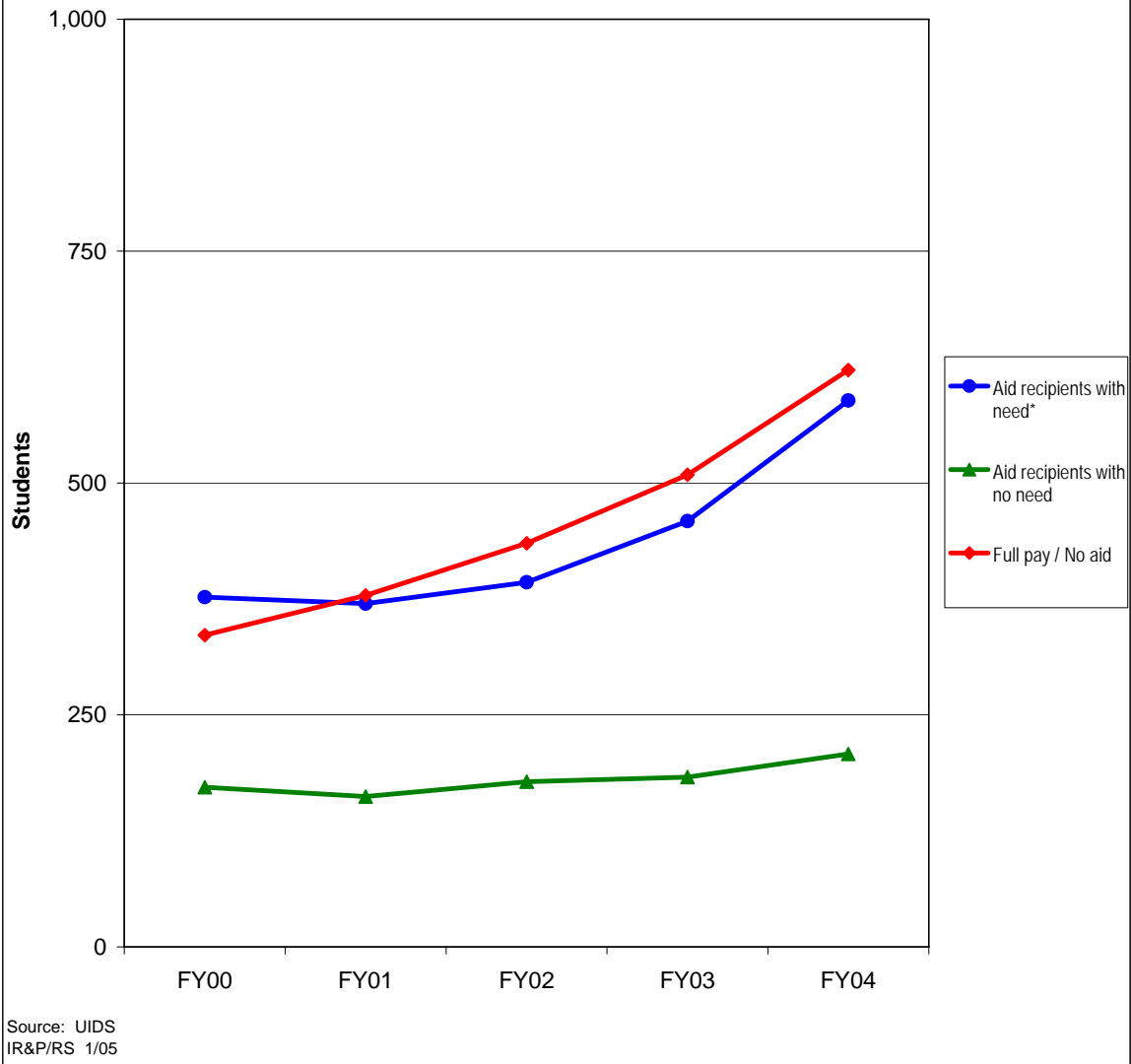
**Table 2.3**

FY00 FY01 FY02 FY03 FY04 FY00 FY01 FY02 FY03 FY04

**Table 2.3 (Continued)**

FY00	FY01	FY02	FY03	FY04	FY00	FY01	FY02	FY03	FY04	# Ch
------	------	------	------	------	------	------	------	------	------	------

**Figure 3.1**  
**Distribution of Financial Aid for Full-time Undergraduate Non- Residents at the**  
**University of Missouri-Kansas City, FY00 - FY04**



	FY00	FY01	FY02	FY03	FY04	5-yr # Change	5-yr % Change
Completed FAFSA, did not have a need	43	42	44	67	80	37	86.0%
Grant aid, no FAFSA	<u>129</u>	<u>120</u>	<u>134</u>	<u>116</u>	<u>128</u>	-1	-0.8%
Aid recipients with no need	172	162	178	183	208	36	20.9%
Aid recipients with need*	377	370	393	459	589	212	56.2%
Full pay / No aid	336	379	435	509	622	286	85.1%
<b>Total of all full- time, Degree-Seeking non-MO UG</b>	<b>885</b>	<b>911</b>	<b>1,006</b>	<b>1,151</b>	<b>1,419</b>	<b>534</b>	<b>60.3%</b>

\* All aid recipients with need completed a FAFSA and were not expected to pay the entire cost of attendance.

Note: Undergraduate Pharmacy and Medical students have been removed from this analysis.





**Table 3.1**

**Average Institutional Grant Aid Distributed to Non-Resident, Full-time, Degree-Seeking Undergraduates by Financial Need at the University of Missouri-Kansas City, FY00 - FY04**

	FY00		FY01		FY02		FY03		FY04	
	N	Mean	N	Mean	N	Mean	N	Mean	N	Mean
With Need	377	\$3,411	370	\$3,357	393	\$1,937	459	\$835	589	\$764
Without Need	172	4,747	162	4,656	178	2,621	183	1,952	208	1,706

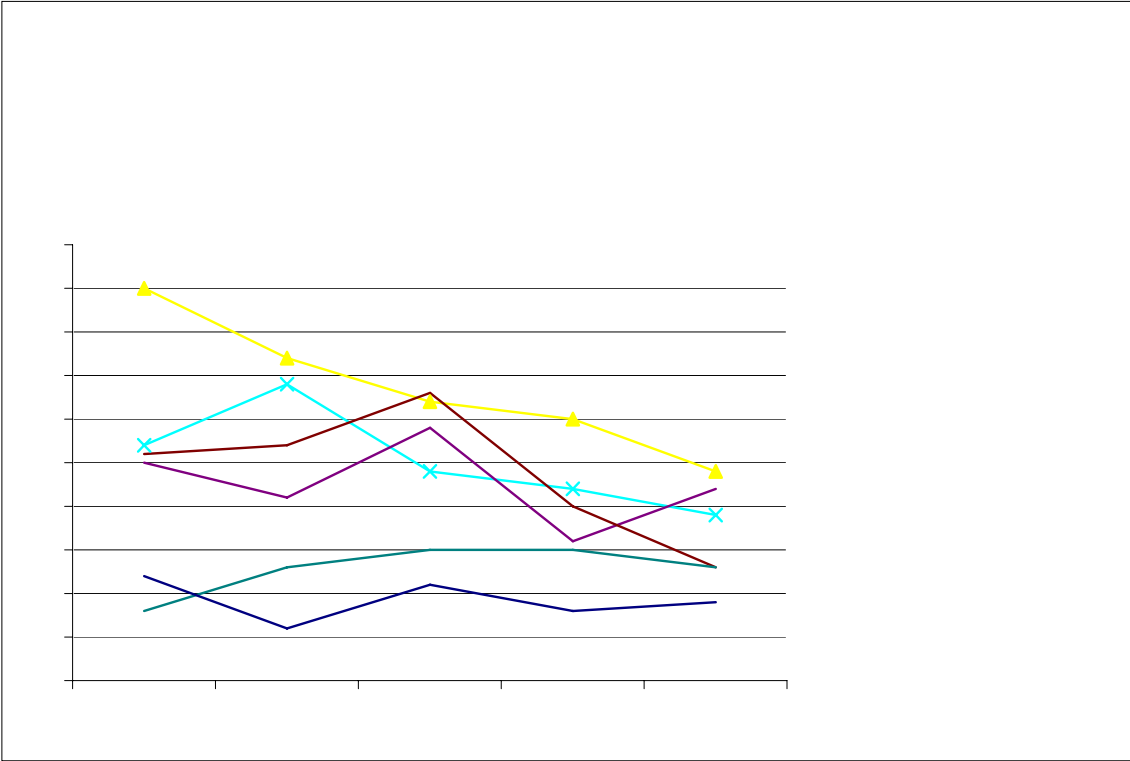
Source: UIDS  
IR&P/LCB 3/05

**Table 3.2**

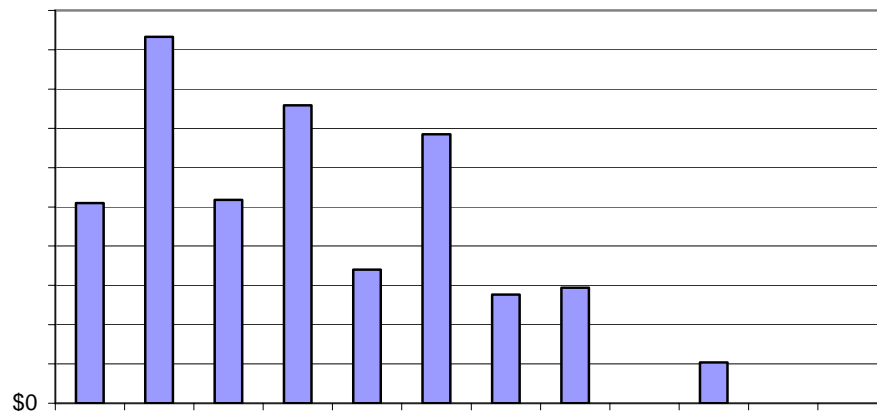
**Total Grant Aid as % of Educational and Required Fees by Income Level at the University of Missouri-Kansas City, FY00 & FY04**

Income Level	FY00		FY04	
	% Educational & Required		% Educational & Required	
	Grant Aid	Fees	Grant Aid	Fees
<\$20,000	\$8,723	70%	\$11,691	72%
\$20,000 to \$40,00	\$9,651	77%	\$12,571	78%
\$40,000 to \$60,000	\$10,379	83%	\$11,938	74%
\$60,000 to \$80,000	\$9,521	76%	\$8,730	54%
\$80,000 to \$100,000	\$8,342	67%	\$11,379	70%
>\$100,000	\$9,542	76%	\$13,483	83%

Source: UIDS  
IR&P/LCB 3/05



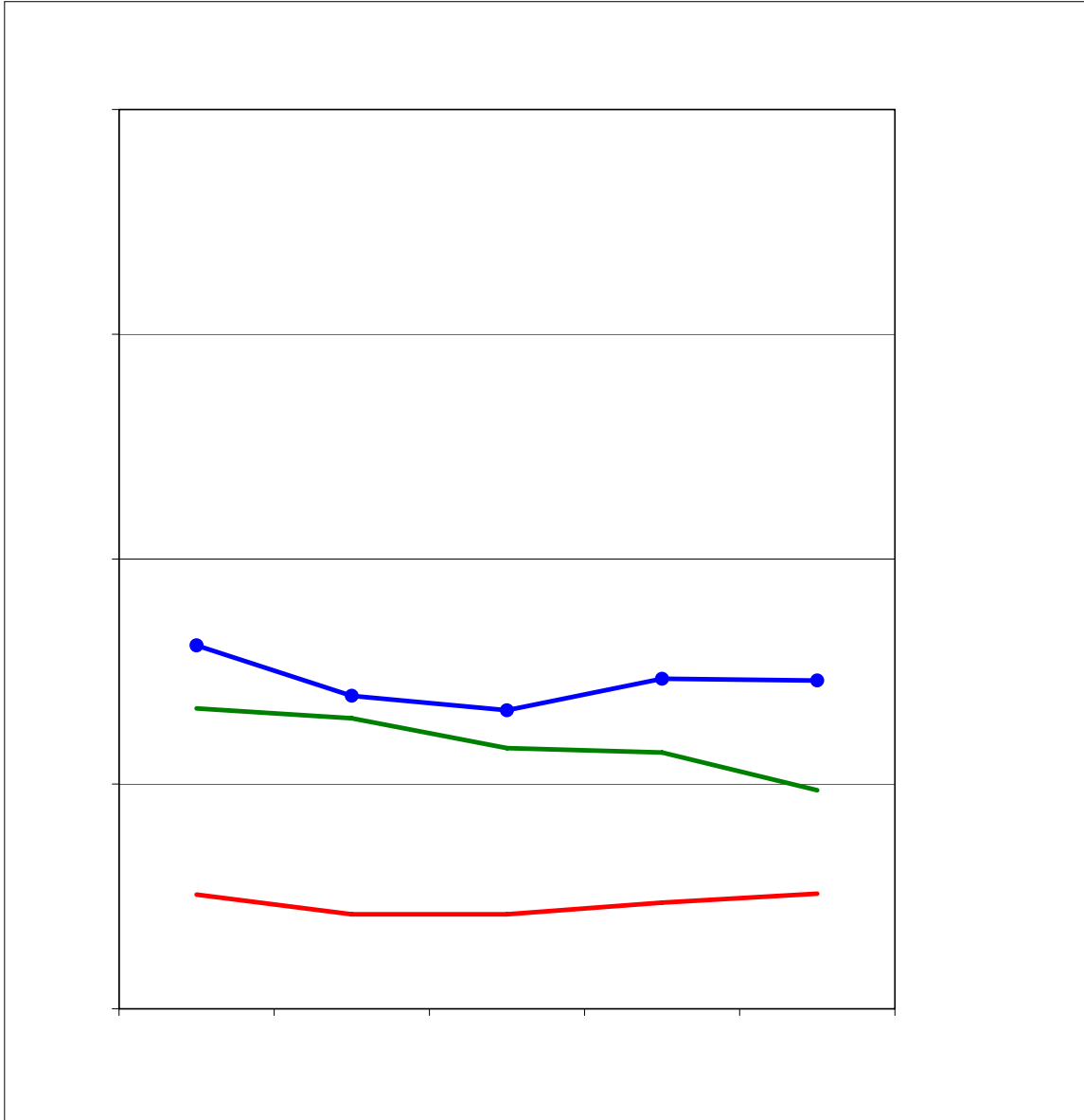
**Figure 3.5**  
**Average Amount of Unmet Financial Need by Income Level at**  
**the UM-Kansas City, FY00 vs. FY04**



**Table 3.3**

**Table 3.3 (Continued)**

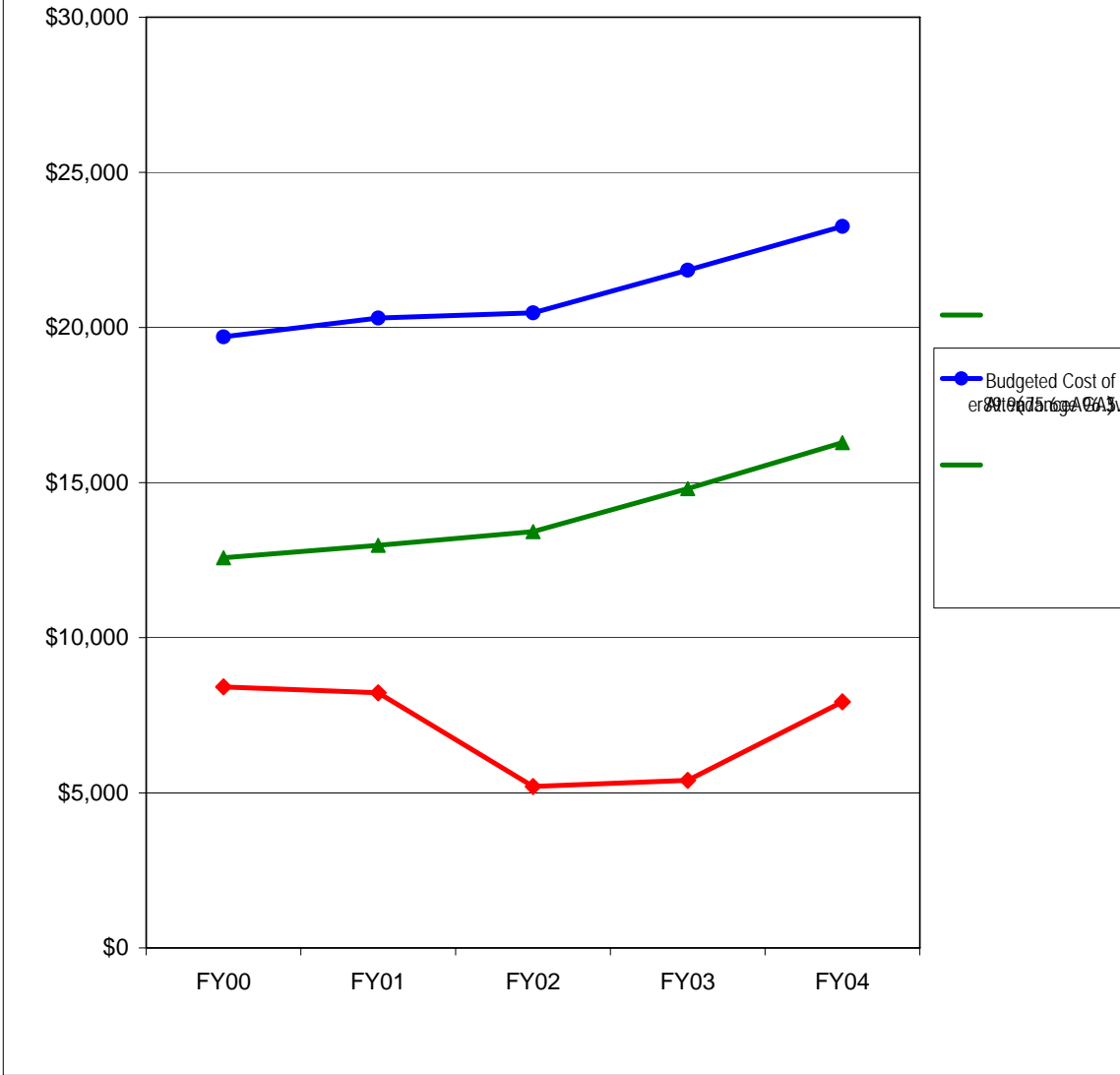
	FY00	FY01	FY02	FY03	FY04	FY00	FY01	FY02	FY03	FY04	# Change FY00-FY04	% Change FY00-FY04
Total Enrolled for 9 months (N)	26	27	33	20	13						-13	-50%



	FY00	FY01	FY02	FY03	FY04	5-yr # Change	5-yr % Change
Completed FAFSA, did not have a need	80	89	87	98	89	9	11.3%
Grant aid, no FAFSA	254	234	203	187	154	-100	-39.4%
Aid recipients with no need	334	323	290	285	243	-91	-27.2%
Aid recipients with need*	404	348	332	367	365	-39	-9.7%
Full pay / No aid	127	105	105	118	128	1	0.8%
<b>Total of all full-time, Degree-Seeking non-MO UG</b>	<b>865</b>	<b>776</b>	<b>727</b>	<b>770</b>	<b>736</b>	<b>-129</b>	<b>-14.9%</b>

\* All aid recipients with need completed a FAFSA and were not expected to pay the entire cost of attendance.

**Figure 4.2: Educational and Required Fees vs. 9-Month Cost of Attendance and Grant Aid for Full-time Undergraduate Non-Residents at the University of Missouri-Rolla, FY00 - FY04**



	FY00	FY01	FY02	FY03	FY04	5-yr # Change	5-yr % Change
Budgeted Cost of Attendance	\$19,696	\$20,305	\$20,468	\$21,846	\$23,261	\$3,565	18.1%
Educational & Required Fees	\$12,578	\$12,974	\$13,419	\$14,803	\$16,286	\$3,708	29.5%
Average Grant Aid	\$8,412	\$8,222	\$5,199	\$5,400	\$7,934	-\$478	-5.7%



**Table 4.1**

**Average Institutional Grant Aid Distributed to Non-Resident, Full-time, Degree-Seeking Undergraduates by Financial Need at the University of Missouri-Rolla, FY00 - FY04**

	FY00		FY01		FY02		FY03		FY04	
	N	Mean	N	Mean	N	Mean	N	Mean	N	Mean
With Need	404	\$3,166	348	\$6,439	332	\$6,112	367	\$5,959	365	\$4,797
Without Need	334	6,933	323	6,578	290	6,709	285	6,099	243	6,036

Source: UIDS  
IR&P/LCB 3/05

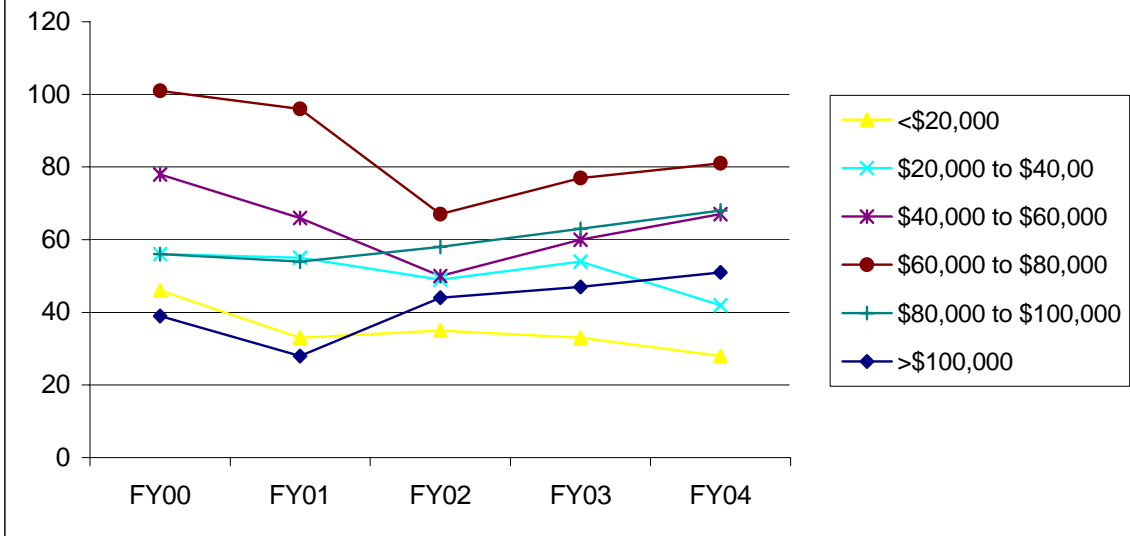
**Table 4.2**

**Total Grant Aid as % of Educational and Required Fees by Income Level at the University of Missouri-Rolla, FY00 & FY04**

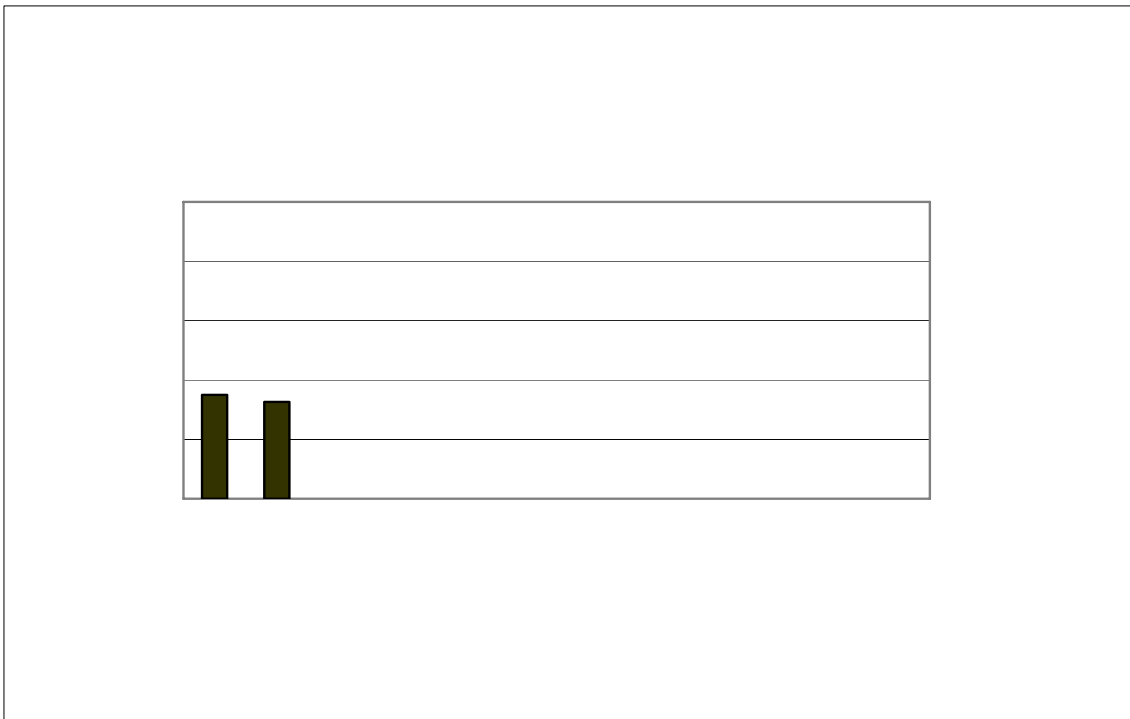
Income Level	FY00		FY04	
	Grant Aid	% Educational & Required Fees	Grant Aid	% Educational & Required Fees
<\$20,000	\$8,752	70%	\$8,151	50%
\$20,000 to \$40,00	\$9,959	79%	\$11,552	71%
\$40,000 to \$60,000	\$8,072	64%	\$8,736	54%
\$60,000 to \$80,000	\$8,268	66%	\$7,287	45%
\$80,000 to \$100,000	\$7,555	60%	\$8,802	54%
>\$100,000	\$7,949	63%	\$7,385	45%

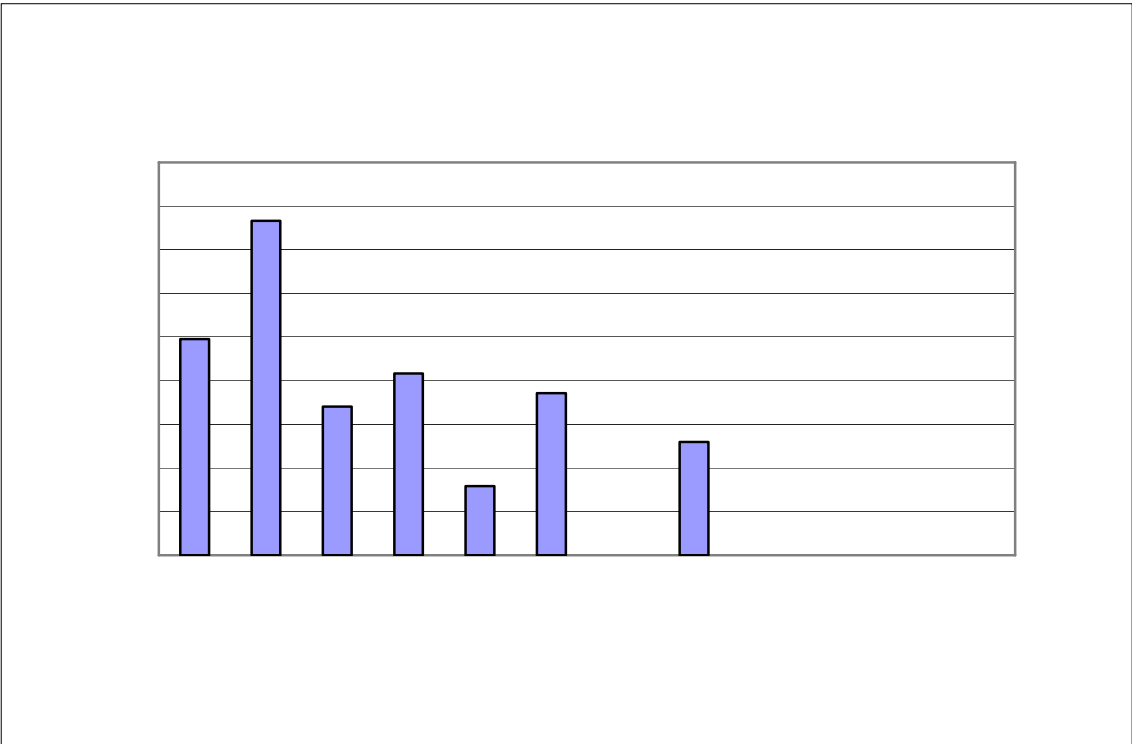
Source: UIDS  
IR&P/LCB 3/05

**Figure 4.3**  
**Number of Full-time, Degree-Seeking 9-Month Undergraduate**  
**Non-Residents with Financial Need by Income Level at the**  
**University of Missouri-Rolla, FY00 - FY04**



Source: UIDS  
 IR&P/LCB 3/05





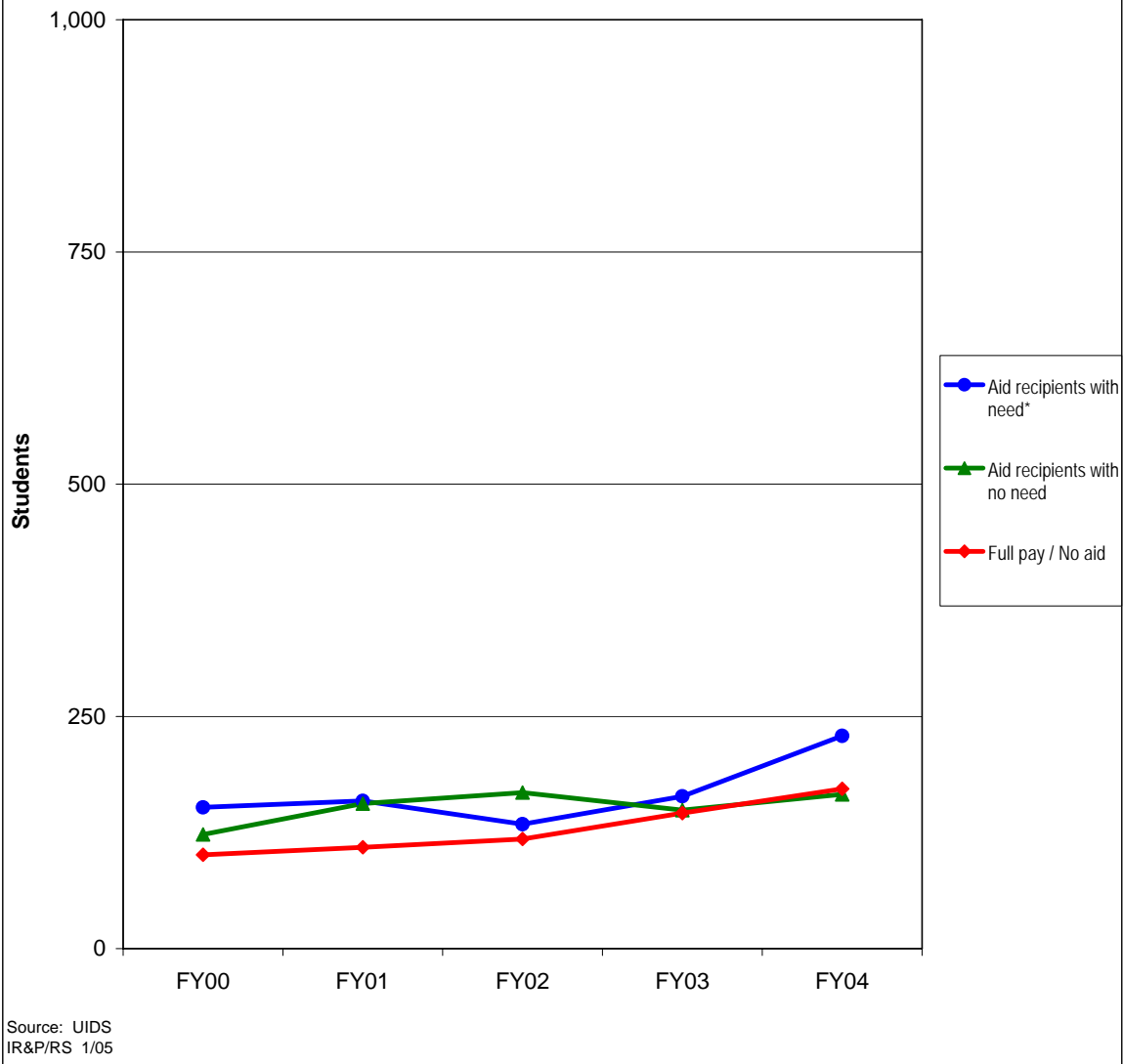
**Table 4.3**

	FY00	FY01	FY02	FY03	FY04	FY00	FY01	FY02	FY03	FY04	# Change FY00-FY04	% Change FY00-FY04
Total Enrolled for 9 months (N)												

**Table 4.3 (Continued)**

	FY00	FY01	FY02	FY03	FY04	FY00	FY01	FY02	FY03	FY04	# Change FY00-FY04	% Change FY00-FY04
<b>Total Enrolled for 9 months (N)</b>	101	96	67	77	81						-20	-20%
Cost of Attendance	\$19,725	\$20,386	\$20,908	\$21,759	\$23,387						\$3,662	19%
Less Expected Family Contribution*	<u>9,615</u>	<u>10,401</u>	<u>9,385</u>	<u>9,805</u>	<u>10,515</u>	49%	51%	45%	45%	45%	900	9%
Financial Need	10,110	9,985	11,523	11,954	12,872	51%	49%	55%	55%	55%	2,762	27%
Less Grant Aid	8,268	8,101	8,732	7,507	7,287	42%	40%	42%	35%	31%	-981	-12%

**Figure 5.1**  
**Distribution of Financial Aid for Full-time Undergraduate Non-Residents at the**  
**University of Missouri-St. Louis, FY00 - FY04**



	FY00	FY01	FY02	FY03	FY04	5-yr # Change	5-yr % Change
Completed FAFSA, did not have a need	20	24	22	20	38	18	90.0%
Grant aid, no FAFSA	<u>103</u>	<u>132</u>	<u>146</u>	<u>129</u>	<u>128</u>	<u>25</u>	24.3%
Aid recipients with no need	123	156	168	149	166	43	35.0%
Aid recipients with need*	152	159	134	164	229	77	50.7%
Full pay / No aid	101	109	118	146	172	71	70.3%
<b>Total of all full- time, Degree-Seeking non-MO UG</b>	<b>376</b>	<b>424</b>	<b>420</b>	<b>459</b>	<b>567</b>	<b>191</b>	<b>50.8%</b>

\* All aid recipients with need completed a FAFSA and were not expected to pay the entire cost of attendance.


	FY00	FY01	FY02	FY03	FY04	5-yr # Change	5-yr % Change
Budgeted Cost of Attendance	\$19,371	\$19,699	\$22,478	\$27,611	\$28,450	\$9,079	46.9%
Educational & Required Fees	\$12,683	\$13,109	\$13,561	\$14,966	\$16,313	\$3,630	28.6%
Average Grant Aid	\$8,773	\$8,324	\$8,319	\$9,617	\$12,569	\$3,796	43.3%

\*Metro Fee and Midwest Exchange Students have been removed from this analysis.

**Table 5.1****Average Institutional Grant Aid Distributed to Non-Resident, Full-time, Degree-Seeking Undergraduates by Financial Need at the University of Missouri-St. Louis, FY00 - FY04**

	FY00		FY01		FY02		FY03		FY04	
	N	Mean	N	Mean	N	Mean	N	Mean	N	Mean
With Need	152	\$5,361	159	\$6,231	134	\$6,713	164	\$4,934	229	\$3,420
Without Need	123	5,987	156	6,814	168	7,431	149	7,066	166	7,036

Source: UIDS  
IR&P/LCB 3/05

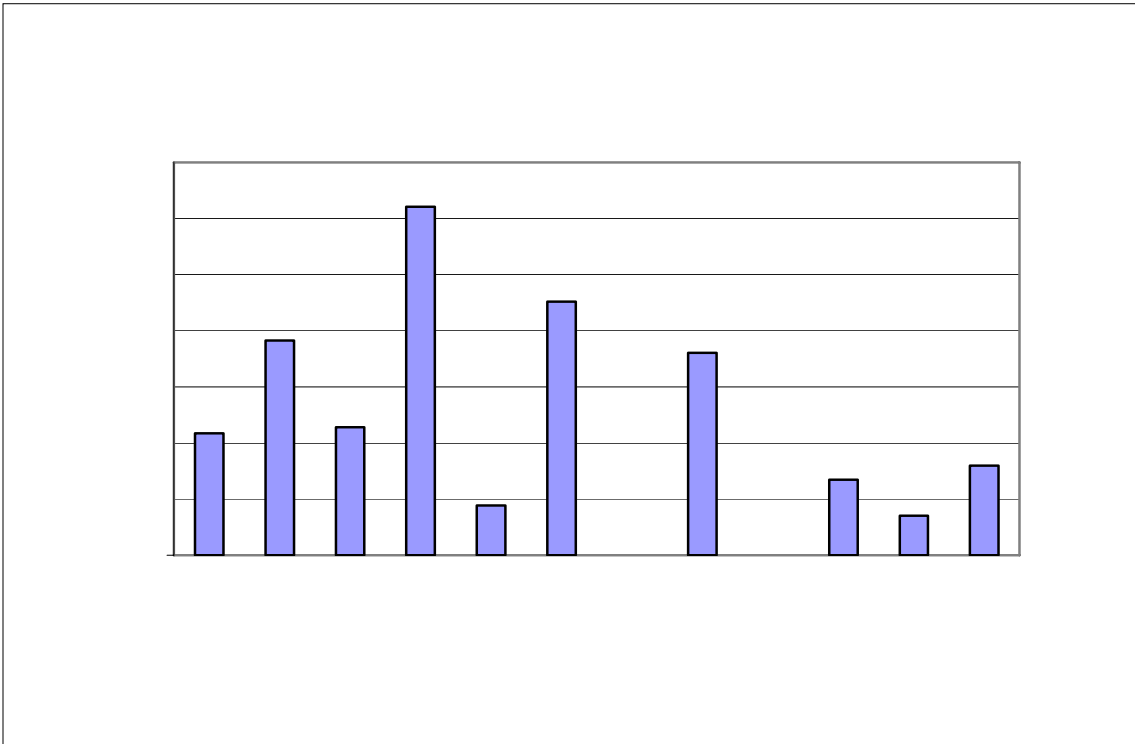
**Table 5.2****Total Grant Aid as % of Educational and Required Fees by Income Level at the University of Missouri-St. Louis, FY00 & FY04**

Income Level	FY00		FY04	
	Grant Aid	% Educational & Required Fees	Grant Aid	% Educational & Required Fees
<\$20,000	\$8,879	70%	\$13,199	81%
\$20,000 to \$40,00	\$9,323	74%	\$9,990	61%
\$40,000 to \$60,000	\$9,921	78%	\$8,437	52%
\$60,000 to \$80,000	\$8,855	70%	\$8,597	53%
\$80,000 to \$100,000	\$6,606	52%	\$7,789	48%
>\$100,000	\$4,659	37%	\$7,539	46%

Source: UIDS  
IR&P/LCB 3/05







**Table 5.3**

	FY00	FY01	FY02	FY03	FY04	FY00	FY01	FY02	FY03	FY04	# Change FY00-FY04	% Change FY00-FY04
<b>Total Enrolled for 9 months (N)</b>	43	39	26	23	17						-26	-60%
Cost of Attendance	\$19,324	\$19,678	\$23,118	\$27,746	\$28,228						\$8,904	46%
Less Expected Family Contribution*	<u>1,652</u>	<u>1,596</u>	<u>1,492</u>	<u>660</u>	<u>1,143</u>	9%	8%	6%	2%	4%	-509	-31%
Financial Need	17,672	18,082	21,626	27,086	27,085	91%	92%	94%	98%	96%	9,413	53%
Less Grant Aid	8,879	9,100	9,080	11,780	13,199	46%	46%	39%	42%	47%	4,320	49%
Unmet Need	\$8,793	\$8,982	\$12,546	\$15,306	\$13,886	46%	46%	54%	55%	49%	5,093	58%
<b>% Grant Aid that Met Financial Need</b>	<b>50%</b>	<b>50%</b>	<b>42%</b>	<b>43%</b>	<b>49%</b>							
<b>Non-Grant Sources to Meet Remaining Unmet Financial Need</b>												
College Work Study	\$157	\$66	\$403	\$558	\$525	1%	0%	2%	2%	2%	368	234%
Need-based Loans	2,994	2,890	3,566	4,117	3,782	15%	15%	15%	15%	13%	788	26%
Alternative Loans	1,294	1,150	1,968	3,162	1,931	7%	6%	9%	11%	7%	637	49%
Remaining Unmet Need	\$4,348	\$4,876	\$6,609	\$7,469	\$7,648	23%	25%	29%	27%	27%	3,300	76%
*Amount Borrowed to meet EFC	\$913	\$948	\$795	\$611	\$975	5%	5%	3%	2%	3%	62	7%
	FY00	FY01	FY02	FY03	FY04	FY00	FY01	FY02	FY03	FY04	# Change FY00-FY04	% Change FY00-FY04
<b>Total Enrolled for 9 months (N)</b>	23	32	22	21	22						-1	-4%
Cost of Attendance	\$19,129	\$19,086	\$22,255	\$27,428	\$28,527						\$9,398	49%

**Table 5.3 (Continued)**